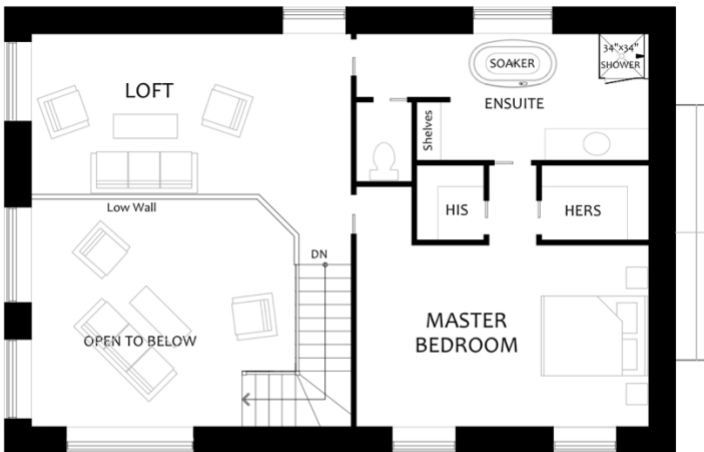


# “COST ANALYSIS”



SECOND FLOOR PLAN

# 'HOUSE' SPECIFIC COSTS

---

## Design

---

- Stonecrop model, 2023 sq.ft.

---

## Foundation – 42.5k

---

- Slab on grade with R56 Passive Styrofoam tray

---

## Weathertight Shell Materials - \$188,471

---

- Weathertight shell material package
- 30k window/door budget included

---

## PassiveHouse Shell Installation - \$91,035

---

- Weathertight shell Installation

---

## Roof Cover – \$26,717

---

- Steel Roofing, wakefield Bridge shingles

---

## Fascia / Soffit – \$6,253

---

- Aluminum fascia & soffit

---

## Exterior Siding & Trim – \$51,975

---

- Exterior siding, Taiga engineered wood maintenance-free siding -
- Exterior Window / Door Trim, Taiga



---

## Insulation – \$29,848

---

- Exterior Shell Walls - (R-75) dense-pack Cellulose
- Roof – (R-110) dense-pack Cellulose

---

## Plumbing – 15k

---

- ABS, Pex pipe & fittings to all fixtures
- 2 exterior hose taps
- Heat-pump water heater included
- Valves on all accessible fixtures

---

## Electrical – 25k

---

- 200 amp underground service
- All wiring to plugs, switches & mechanicals. Fixtures installed
- 2 exterior plugs
- Telephone & cable wiring

---

## HVAC – 32.5k

---

- Heating & Air Conditioning – Mitsubishi Mr. Slim air-to-air heat pump
- HRV – Jablotron

---

## Drywall – 22.5k

---

- Drywall for all walls & ceilings

**TOTAL 'Drywall Stage' - \$531,799**



---

## Interior Finishes – 103k

---

- Paint / Stain – all drywalled areas & trim / doors (10k)
- Wood Flooring (2<sup>nd</sup> floor) @ concrete seal 1<sup>st</sup> floor (15k)
- Tiles @ washrooms (8k)
- Kitchen & Vanities including stone counters (30k)
- Carpentry – stairs / railing, interior doors & trim including baseboard, window trim (25k)
- Plumbing & electrical Fixtures (7.5k)
- Closets / built-ins (7.5k)

### NOTES:

- Building Permits & Project Management are not included
- Site work is not included (excavation, backfill, landscaping, etc...)

