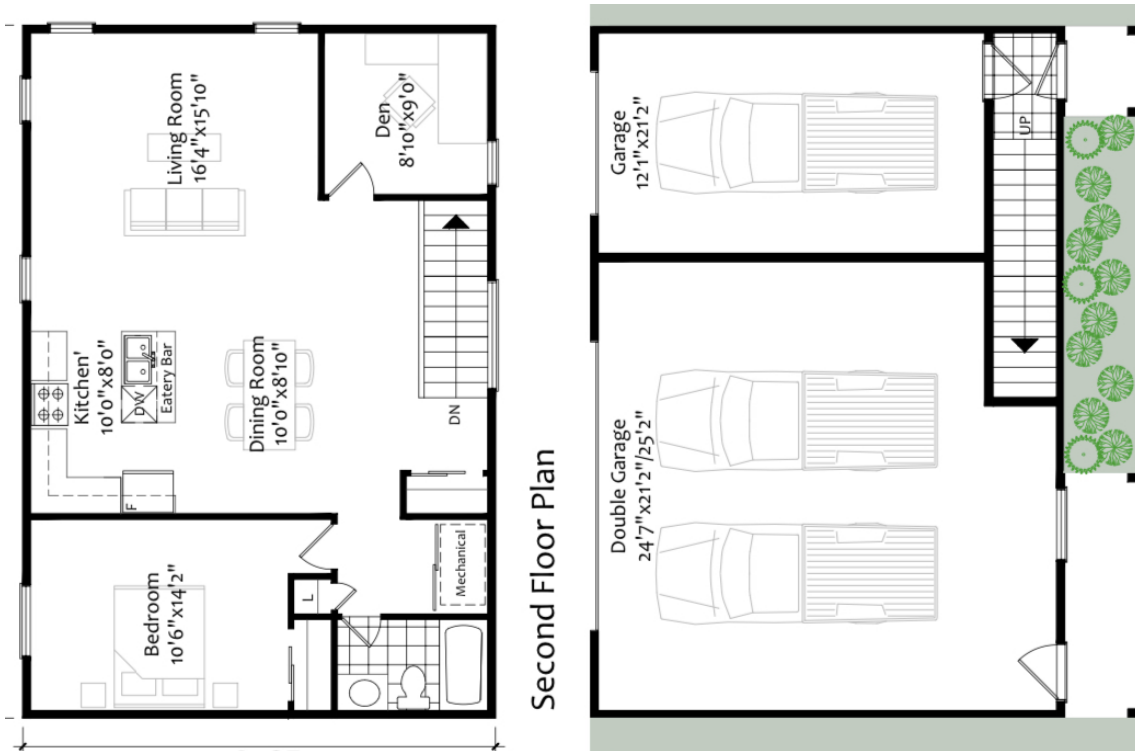


# “COST ANALYSIS”



# 'HOUSE' SPECIFIC COSTS

---

## Design

---

- 24' x 36' main floor garage [Interior dimensions], with full 2<sup>nd</sup> 'Passive' floor
- Includes 1 x entry porch overhang

---

## Foundation (slab-on-grade) — 30k

---

- slab-on-grade frost-protected style foundation, steel trowel finish
- styrofoam tray around slab, R20 insulated

---

## Weathertight Shell Package — \$213,638

---

- materials (\$150,158) & Installation (\$63,480)
- Includes wall/roof assemblies, design package, 2<sup>nd</sup> floor system, interior framing, tapes/gaskets
- Walls - Lower level 2x6 frame, upper level 14" I-joist / 2x6 passive system
- Includes (6' x 10') covered entrance (1)
- Ceilings – 9' @ Garage, 8' @ 2<sup>nd</sup> c/w cathedral
- Window/Door budget (included with price) 25k

---

## Roof Cover — \$22,540

---

- Steel Roofing, Ideal Junior Heritage

---

## Fascia / Soffit — \$5,715

---

- Aluminum fascia & soffit



---

## Exterior Siding & Trim – \$49,350

---

- Exterior siding, Taiga engineered wood maintenance-free siding -
- Exterior Window / Door Trim, Taiga

---

## Insulation – \$24,365

---

- R75 Walls R110 Roof, R75 Floor

---

## Plumbing – 12.5k

---

- ABS, Pex pipe & fittings to all fixtures
- 2 exterior hose taps
- Rough & Finish Plumbing

---

## Electrical – 17.5k

---

- 100 amp service
- All wiring to plugs, switches & mechanicals
- 2 exterior plugs

---

## HVAC – 20k

---

- Heating, HRV, Air Conditioning

---

## Drywall – 12.5k

---

- Drywall for all walls & ceilings, ready for paint

**TOTAL (drywall stage) \$408,108 + hst**



---

## INTERIOR FINISHINGS, example— 68.5k

---

- Paint for walls & ceilings (6.5k)
- 2nd flooring (10k)
- Kitchen & Vanities c/w stone counters (15k)
- Carpentry - interior doors, stairs, window / door trim, baseboards (20k)
- Plumbing / electrical fixtures (5k)
- Tiles @ washroom tub (5k)
- Front Entry (7.5k)

### NOTES:

- Building Permits & Project Management are not included
- Site work is not included (excavation, backfill, landscaping, etc...)

