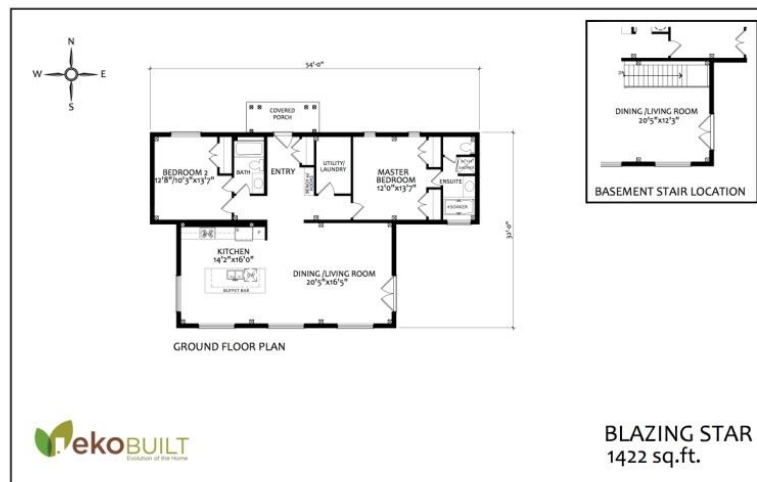


“COST ANALYSIS”



'HOUSE' SPECIFIC COSTS

Foundation – 50k

- Styrofoam Tray Slab-on-grade system, Passive Approved

PassiveHouse Shell Materials - \$149,655

- PassiveHouse shell material package
- Includes 27.5k window/door budget

PassiveHouse Shell Installation - \$63,990

- PassiveHouse shell Installation

Roof Cover – \$30,795

- Steel Roofing, Ideal Heritage

Fascia / Soffit – \$7,518

- Aluminum fascia & soffit

Exterior Siding & Trim – \$38,313

- Exterior siding, Taiga engineered
- Exterior Window / Door Trim



Insulation – \$25,792

- Exterior Shell Walls - 20" (R-75) blown Cellulose
- Roof – 30" (R-110) blown Cellulose

Plumbing – 12.5k

- ABS, Pex pipe & fittings to all fixtures
- 2 exterior hose taps
- Heat-pump water heater
- Valves on all accessible fixtures

Electrical – 17.5k

- 200 amp underground service
- All wiring to plugs, switches & mechanicals
- 2 exterior plugs

HVAC – 27.5k

- Heating, ERV & Air Conditioning

Drywall – 15j

- Drywall for all walls & ceilings
- All surfaces painted

TOTAL (drywall stage) \$438,563 + hst



INTERIOR FINISHINGS, example– 67.5k

- Paint for walls & ceilings (7.5k)
- Sealed concrete floor (7.5k)
- Kitchen & Vanities c/w laminate counters (20k)
- Carpentry - interior doors, window / door trim, baseboards (15k)
- Plumbing / electrical fixtures (7.5k)
- Tiles @ washrooms (5k budget)
- Built-ins / closets (5k budget)

NOTES:

- Building Permits & Project Management are not included
- Site work is not included (excavation, backfill, landscaping, etc...)

