



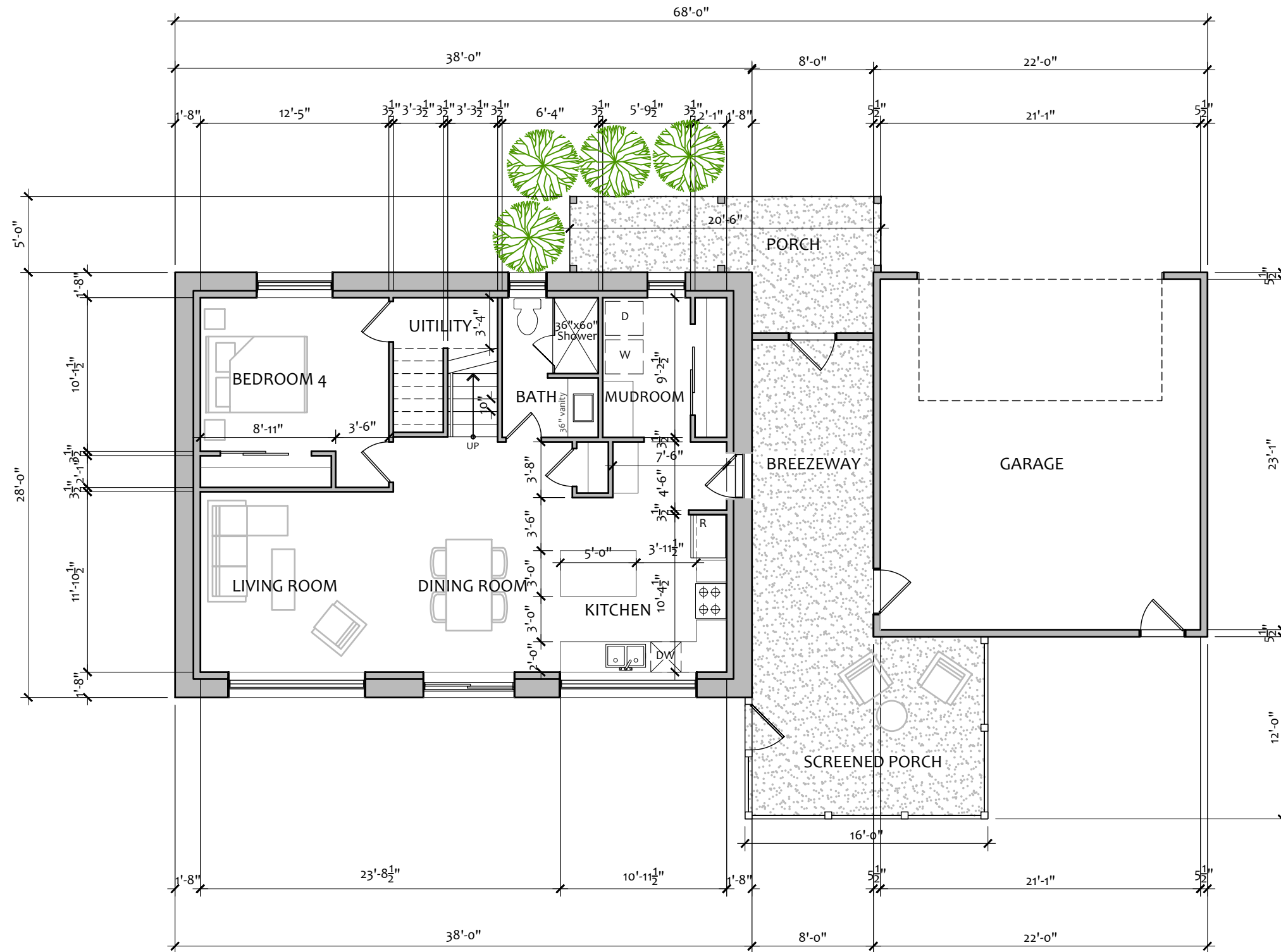
## The Sumac

---

<u>FINISHED AREA:</u>	
Ground Floor :	1064 sq.ft.
Second Floor:	1064 sq.ft.
<hr/>	
Total Floor Area:	2128 sq.ft.



**\*\* 3D Conceptual Renderings \*\***  
**\*\* Final Construction/ Material Colors May Vary \*\***

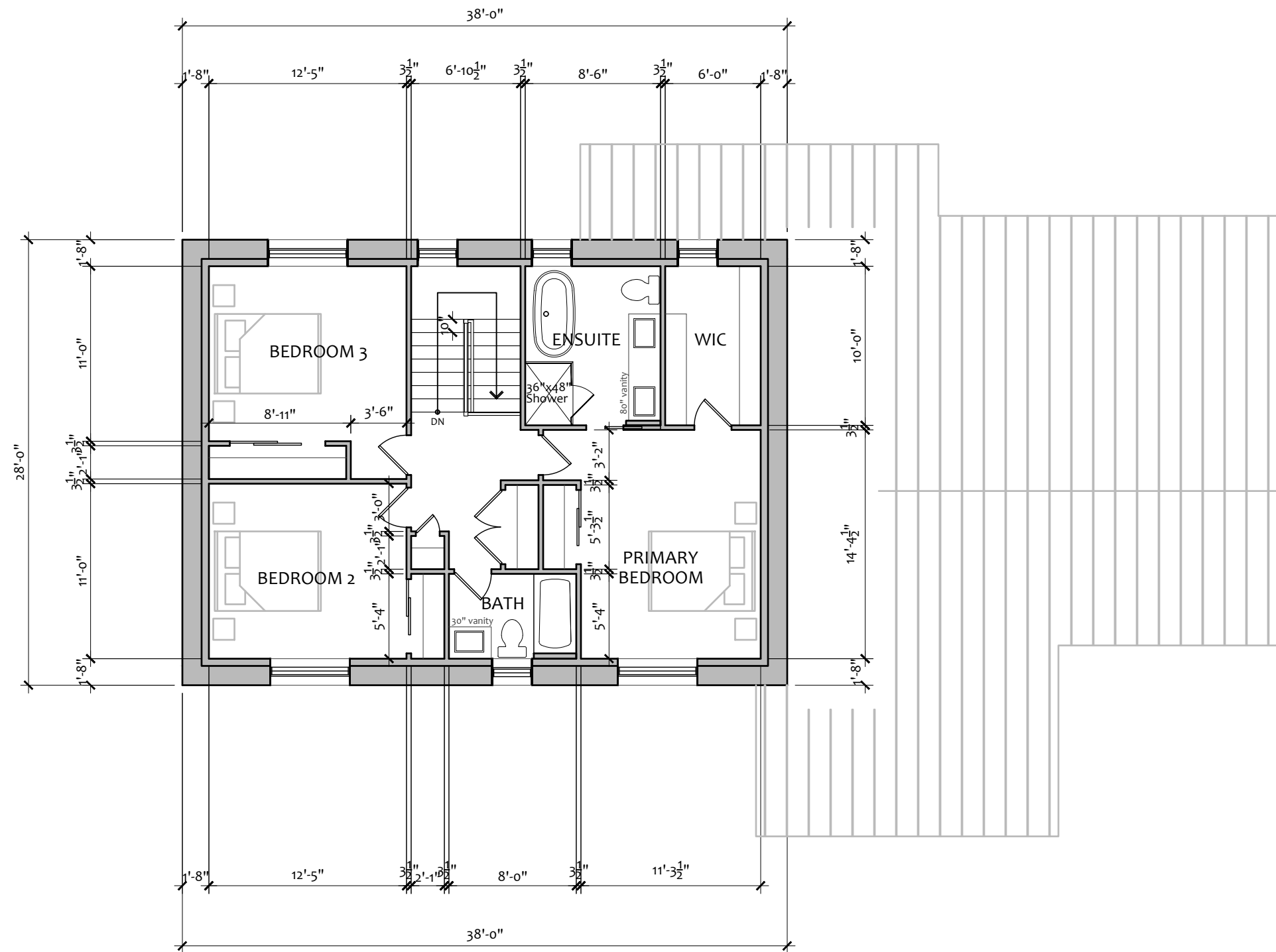


1	Preliminary Design for Review	April 18/22
#	Revisions	Date

GROUND FLOOR PLAN



The Sumac  
 GROUND FLOOR PLAN  
 SCALE: 1/8" = 1'0" (11x17)  
 D-1



SECOND FLOOR PLAN

1	Preliminary Design for Review	April 18/22
#	Revisions	Date



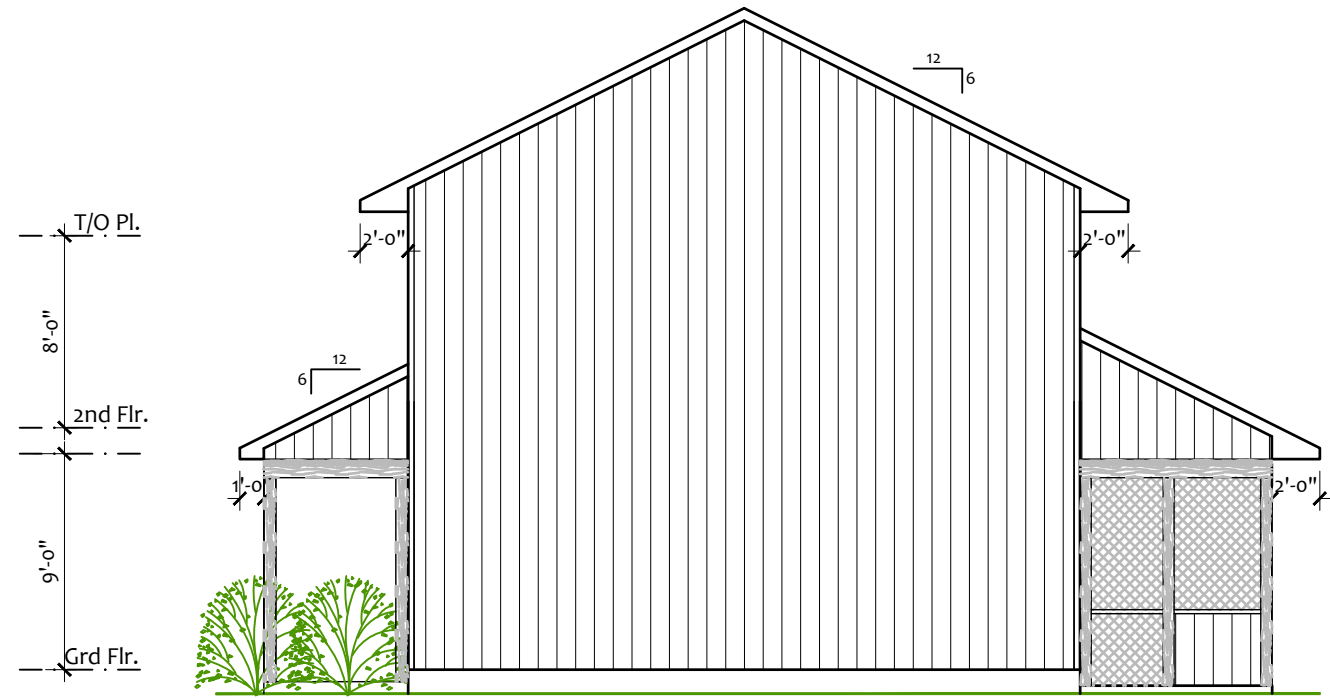
The Sumac

SECOND FLOOR PLAN

SCALE: 1/8" = 1'0" (11x17)



FRONT ELEVATION



RIGHT SIDE ELEVATION

1	Preliminary Design for Review	April 18/22
#	Revisions	Date



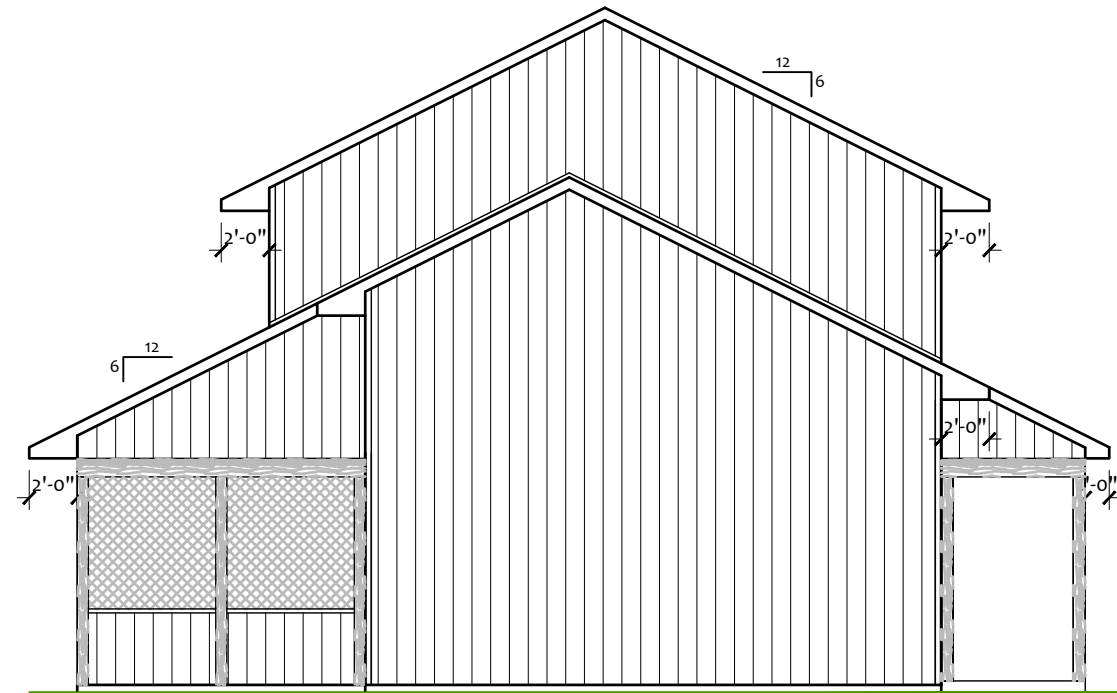
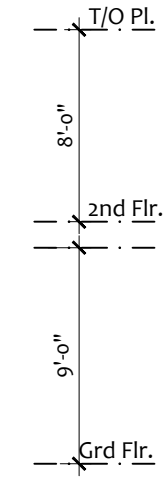
The Sumac

FRONT & RIGHT SIDE ELEVATIONS

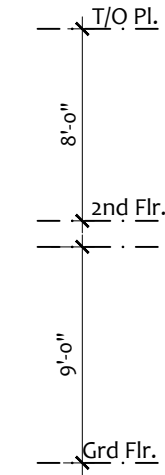
SCALE: 1/8" = 1'0" (11x17)



REAR ELEVATION



LEFT SIDE ELEVATION



1	Preliminary Design for Review	April 18/22
#	Revisions	Date



The Sumac

REAR & LEFT SIDE ELEVATIONS

SCALE: 1/8" = 1'0" (11x17)