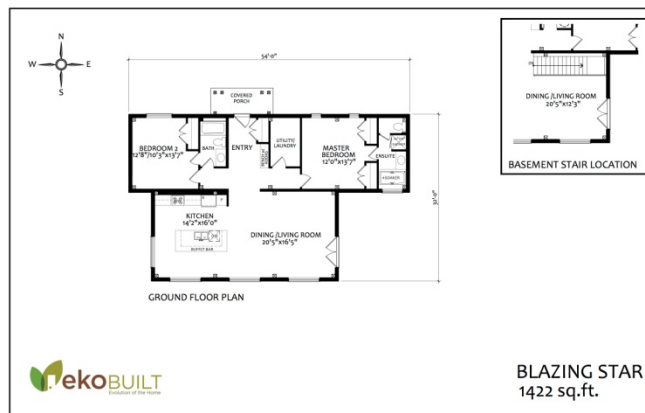


# “COST ANALYSIS”

---



# 'HOUSE' SPECIFIC COSTS

---

## Foundation – 40k

---

- Styrofoam Tray Slab-on-grade system, Passive Approved

## PassiveHouse Shell Materials - \$134,489

---

- PassiveHouse shell material package
- Includes 22.5k window/door budget

## PassiveHouse Shell Installation - \$49,770

---

- PassiveHouse shell Installation

## Roof Cover – \$24,440

---

- Steel Roofing, Ideal Heritage

## Fascia / Soffit – \$7,518

---

- Aluminum fascia & soffit

## Exterior Siding & Trim – \$30,186

---

- Exterior siding, Taiga engineered
- Exterior Window / Door Trim



---

## Insulation – \$23,418

---

- Exterior Shell Walls - 20" (R-75) blown Cellulose
- Roof – 30" (R-110) blown Cellulose

---

## Plumbing – 8k

---

- ABS, Pex pipe & fittings to all fixtures
- 2 exterior hose taps
- Heat-pump water heater
- Valves on all accessible fixtures

---

## Electrical – 15k

---

- 200 amp underground service
- All wiring to plugs, switches & mechanicals
- 2 exterior plugs
- Telephone & cable wiring

---

## HVAC – 18k

---

- Heating, HRV & Air Conditioning – Minotair

---

## Drywall – 12k

---

- Drywall for all walls & ceilings
- All surfaces painted

**TOTAL (drywall stage) \$362,821 + hst**



---

## INTERIOR FINISHINGS, example— 50k

---

- Paint for walls & ceilings (6k)
- Sealed concrete floor (5k)
- Kitchen & Vanities c/w laminate counters (15k)
- Carpentry - interior doors, window / door trim, baseboards (10k)
- Plumbing / electrical fixtures (4k)
- Tiles @ washrooms (5k budget)
- Built-ins / closets (5k budget)

### NOTES:

- Building Permits & Project Management are not included
- Site work is not included (excavation, backfill, landscaping, etc...)

