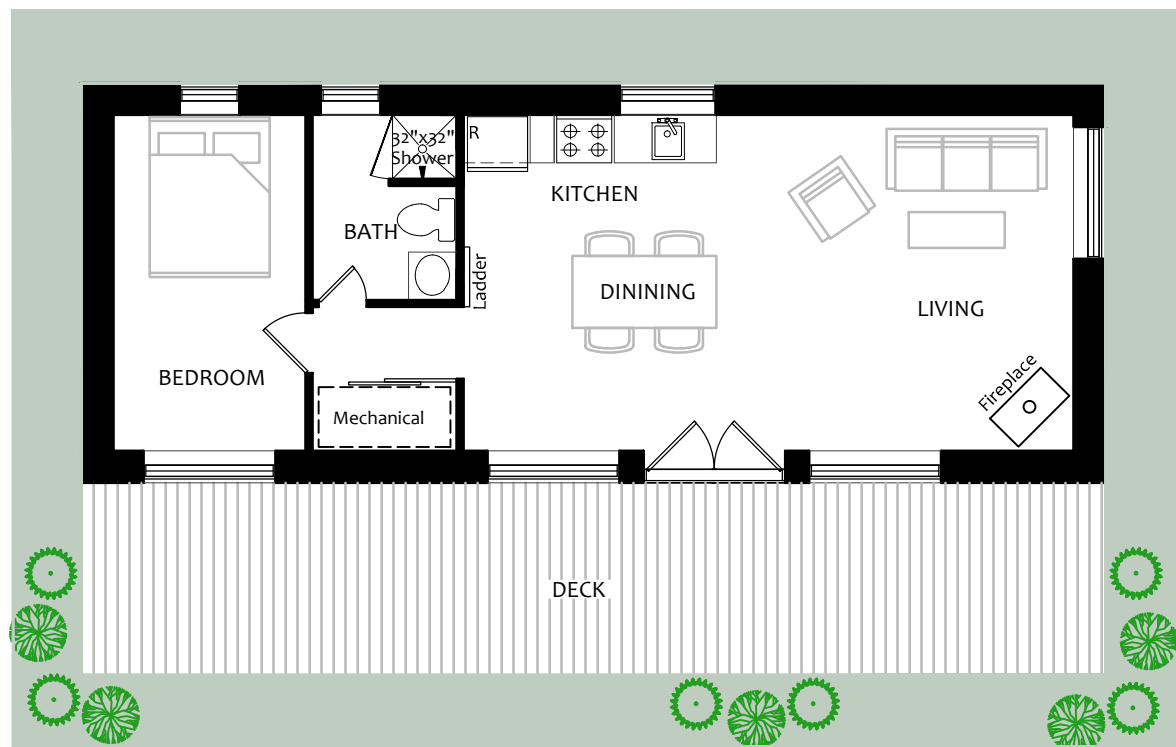


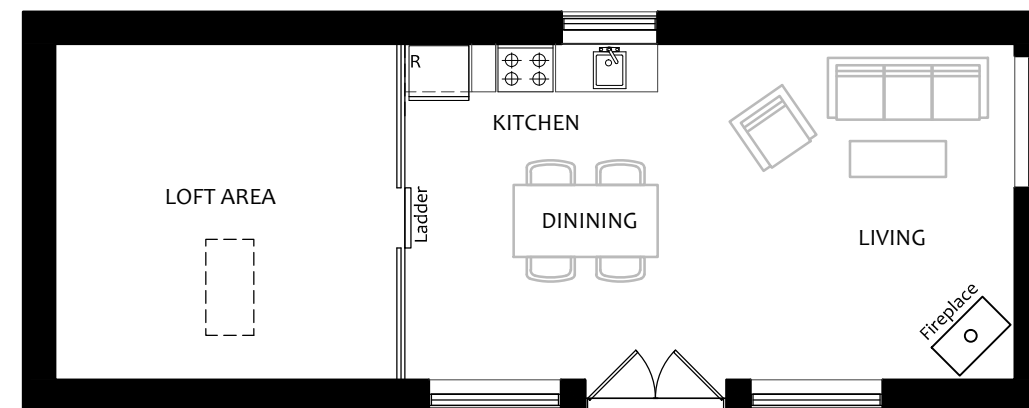


The SWEDE



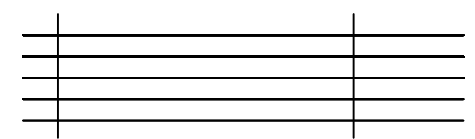


GROUND FLOOR PLAN

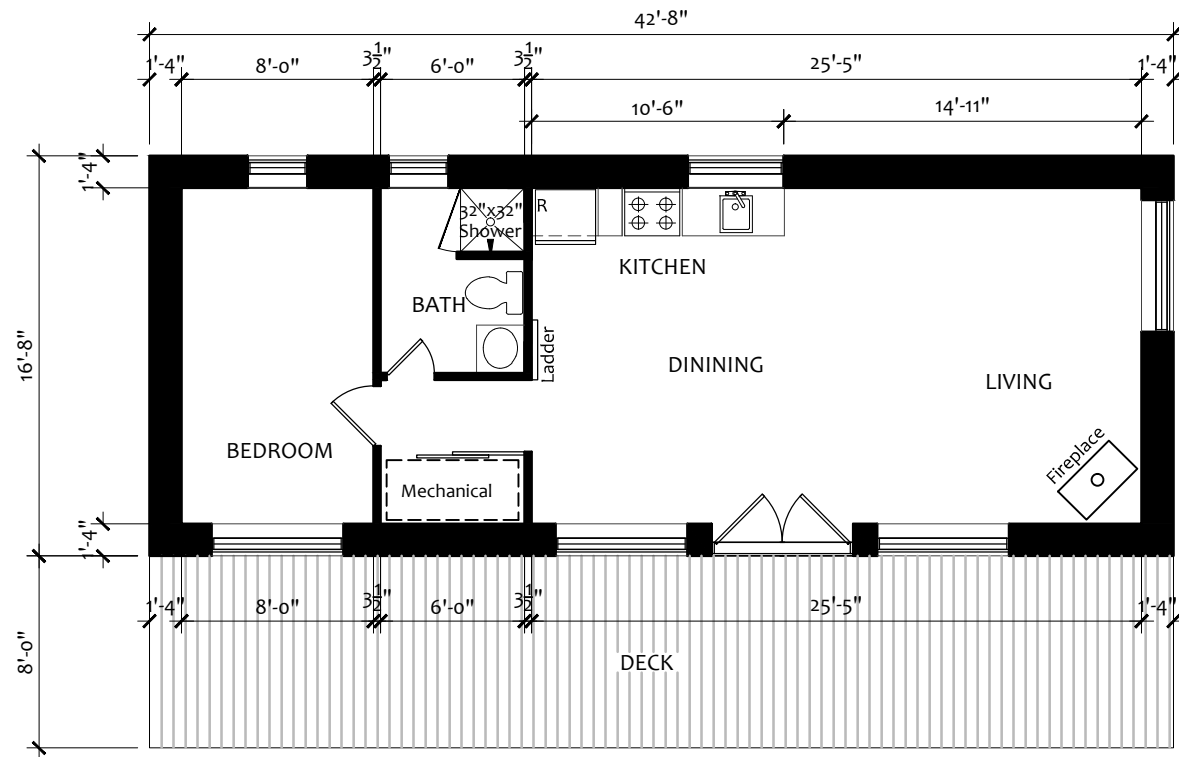


LOFT FLOOR PLAN

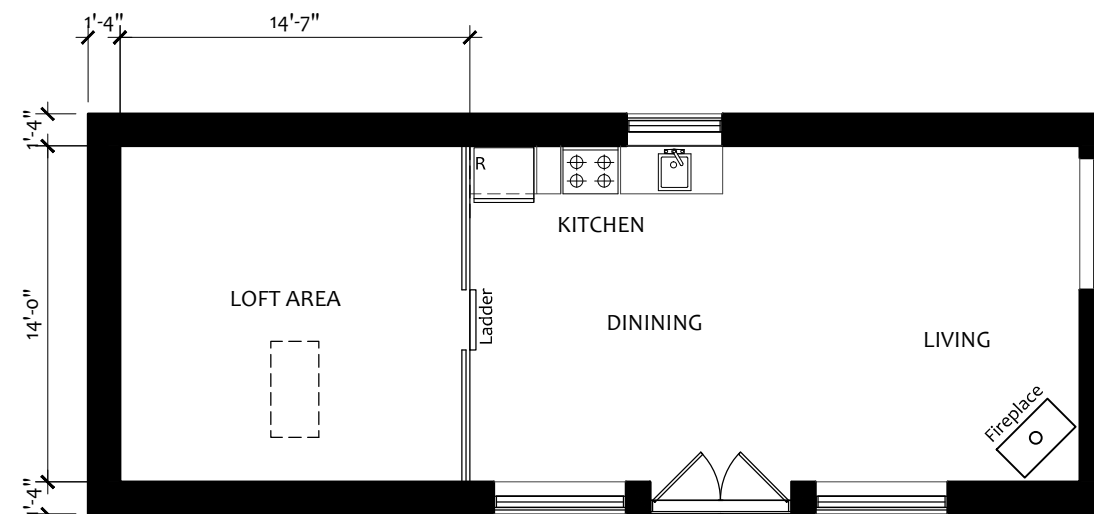
FINISHED AREA:	
GROUND FLOOR:	711 sq.ft.
LOFT AREA :	265 sq.ft.
TOTAL AREA:	976 sq.ft.



The Swede
 PLAN SCALE: 1/8" = 1'0" (11x17)



GROUND FLOOR PLAN

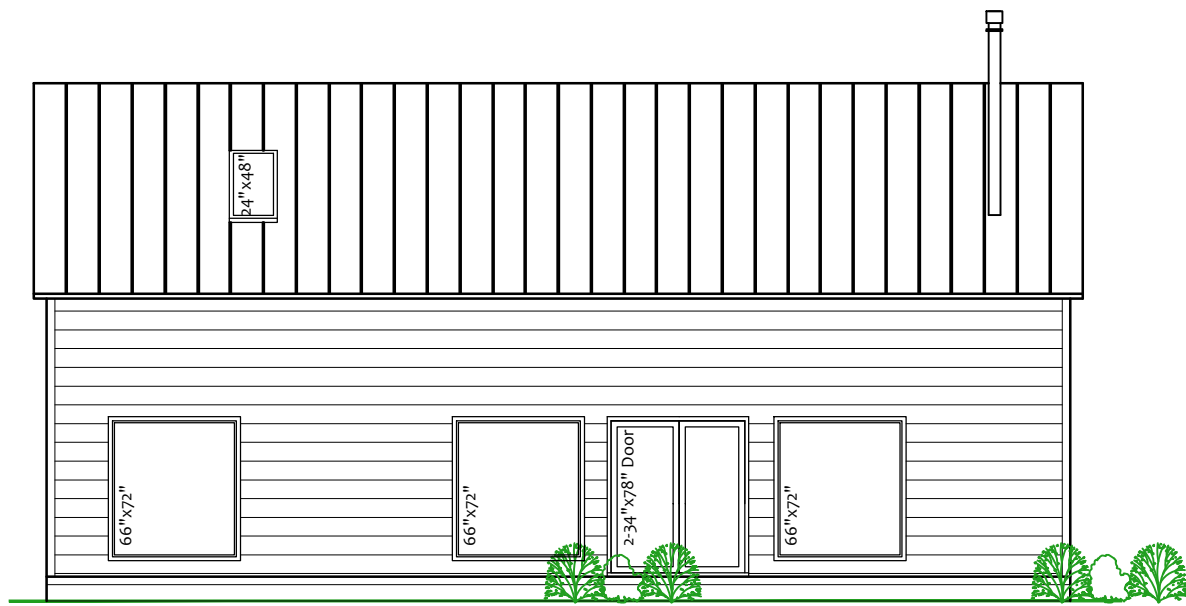


LOFT FLOOR PLAN

FINISHED AREA:	
GROUND FLOOR:	711 sq.ft.
LOFT AREA :	265 sq.ft.
TOTAL AREA:	976 sq.ft.

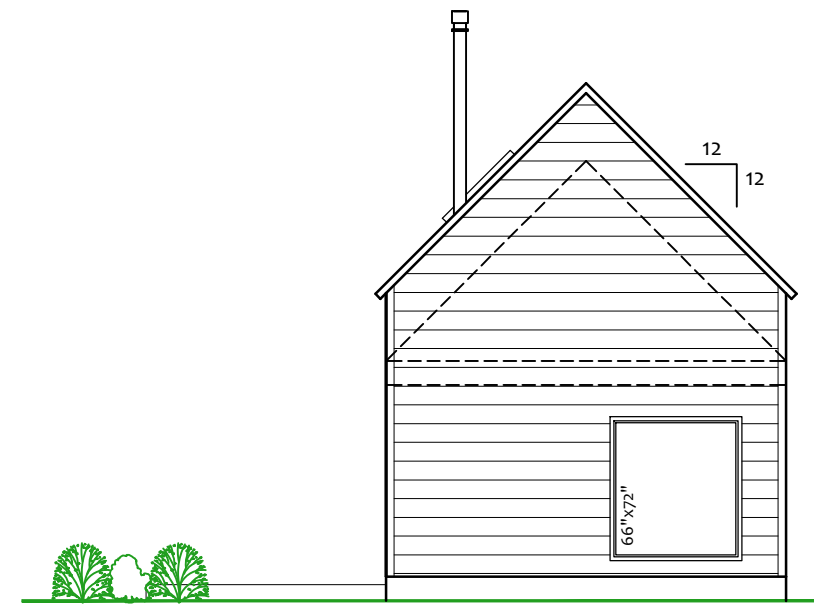


The Swede
 PLAN SCALE: 1/8" = 1'0" (11x17)

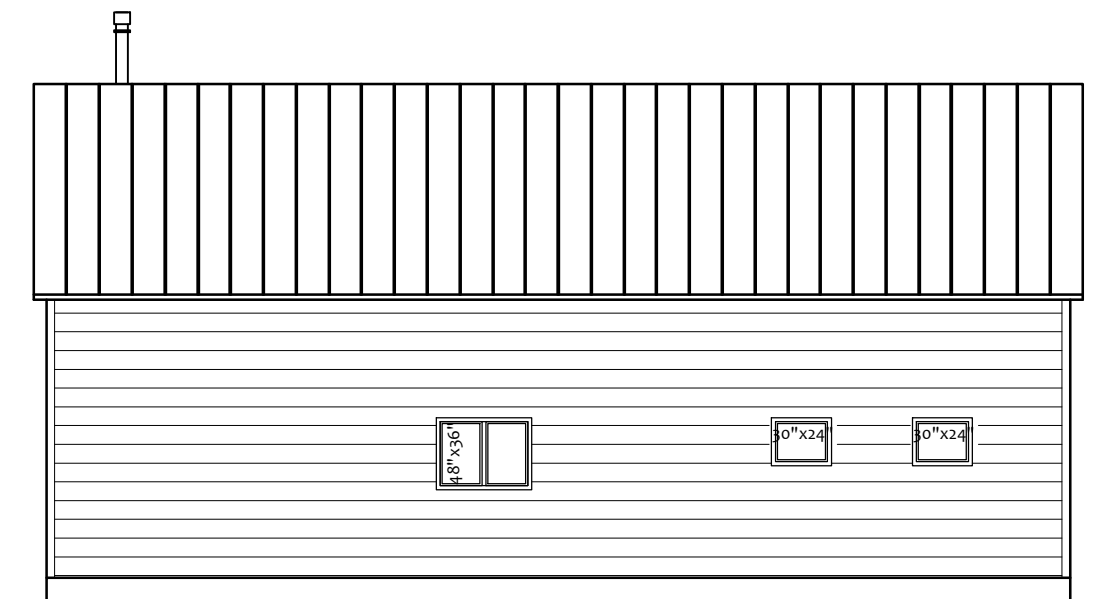


SOUTH ELEVATION

T/O Peak
8'-4"
Loft Flr.
8'-0"
T/O Floor.

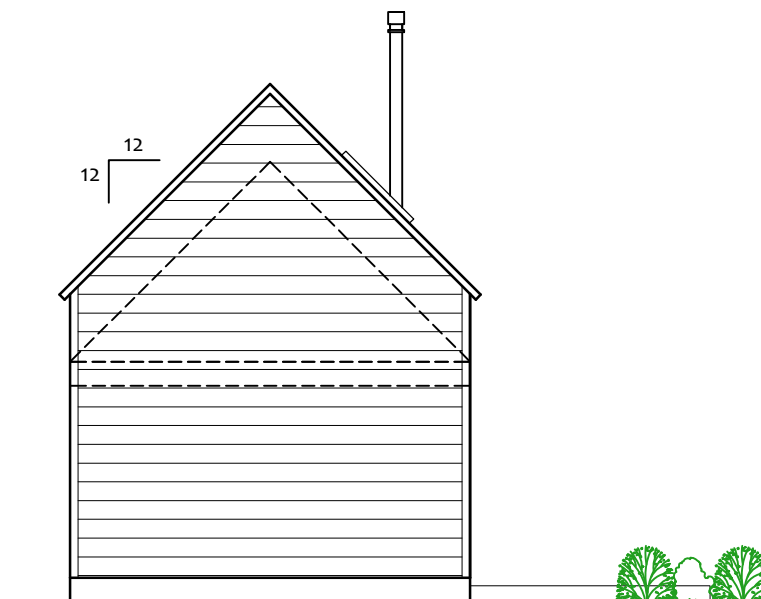


EAST ELEVATION

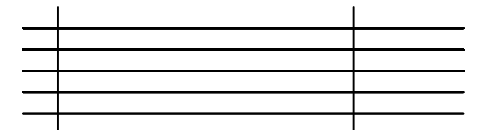


NORTH ELEVATION

T/O Peak
8'-4"
Loft Flr.
8'-0"
T/O Floor.



WEST ELEVATION



The Swede

NORTH, WEST, SOUTH & EAST ELEVATIONS

SCALE: 1/8" = 1'0" (11x17)

A2