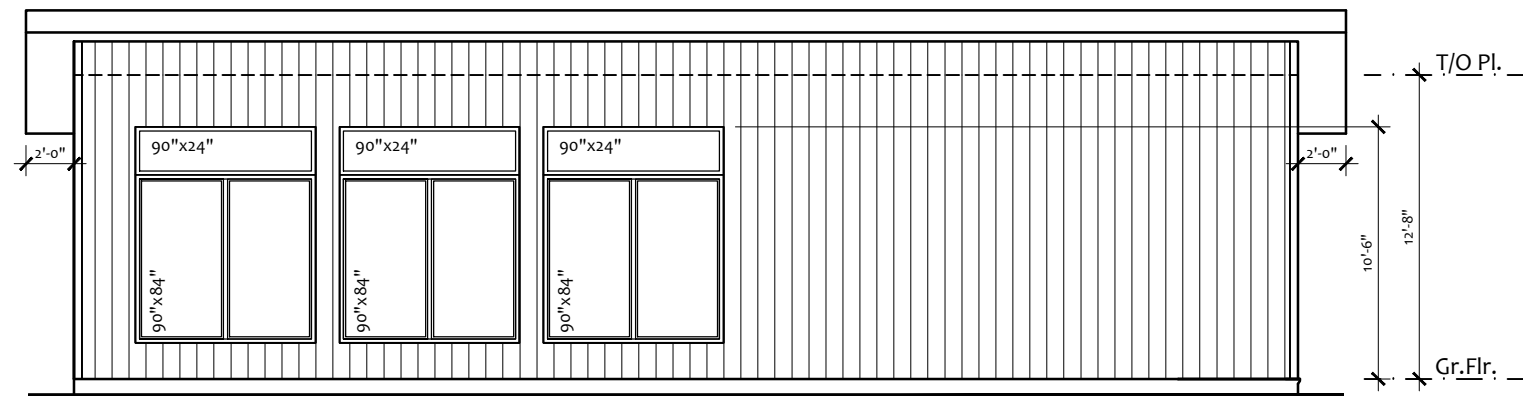
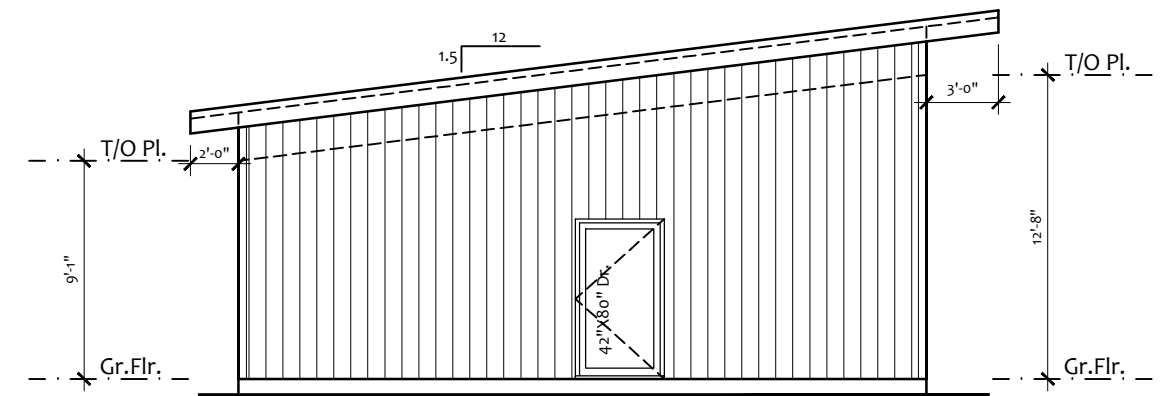




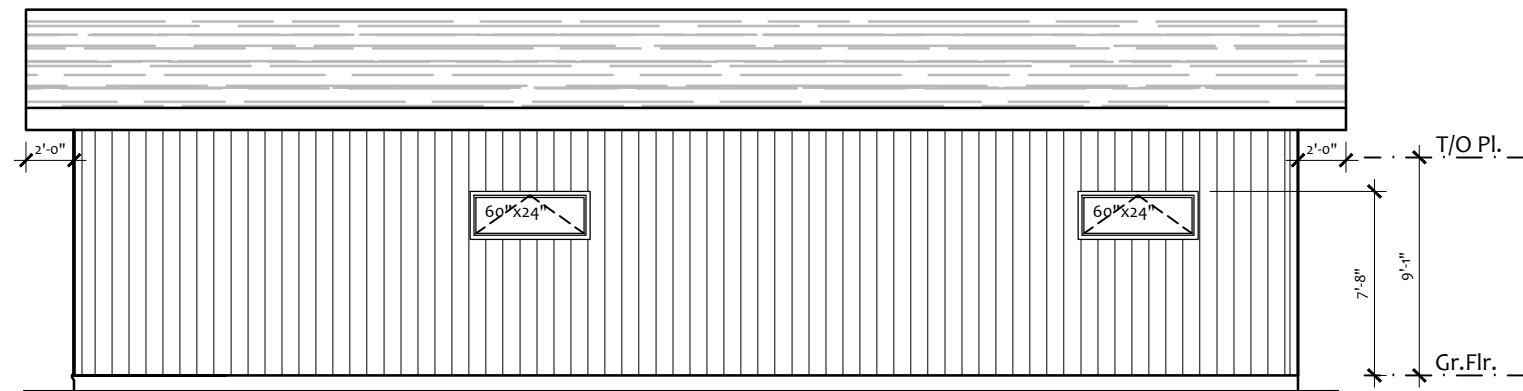
The SHOOTING STAR (2)  
with porch



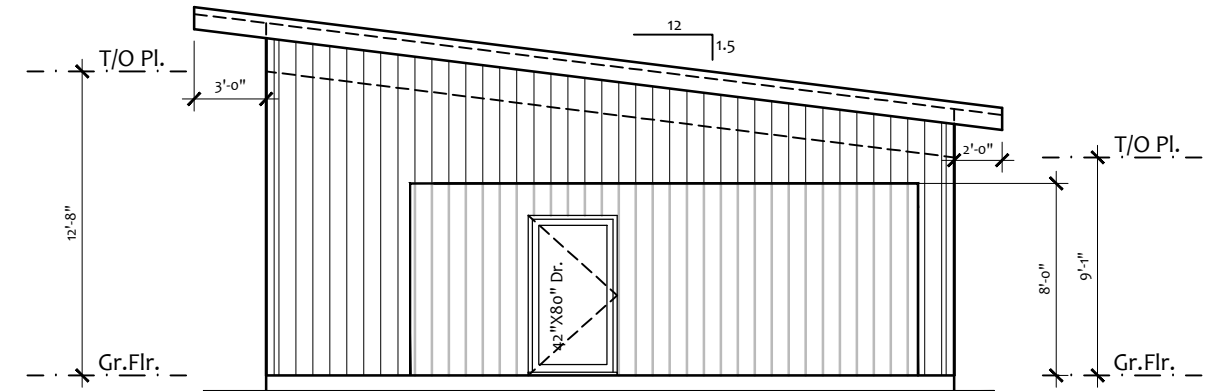
LEFT SIDE ELEVATION



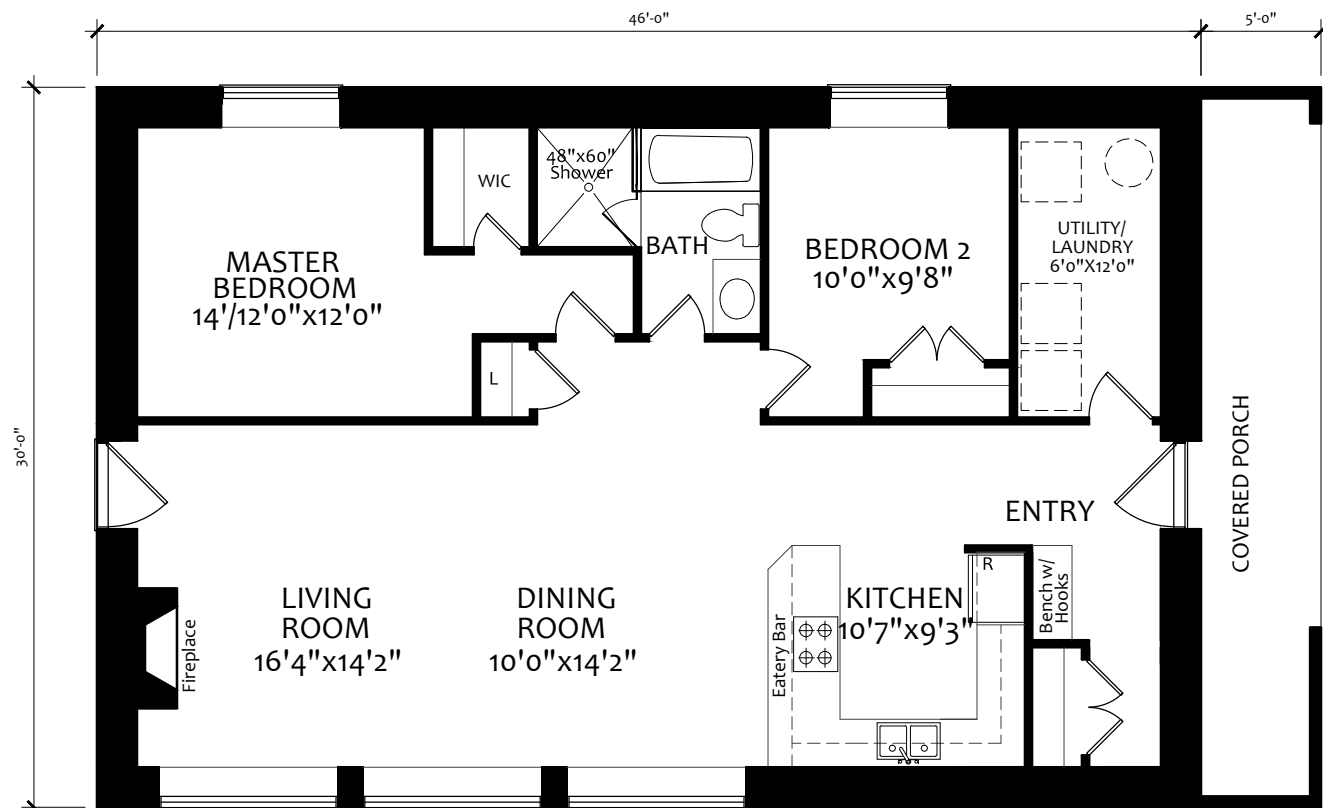
REAR ELEVATION



RIGHT SIDE ELEVATION



FRONT ELEVATION



GROUND FLOOR PLAN



FINISHED AREA:  
GROUND FLOOR: 1380 sq.ft.




The Shooting Star (2) with porch

DRWG.NAME: SHOOTING STAR-GROUND FLOOR PLAN, ELEVATIONS SCALE: 1/8 = 1'-0" (11x17)