



The BYTOWN COTTAGE

FINISHED AREA:

FINISHED BASEMENT: 383 sq.ft.
GROUND FLOOR: 494 sq.ft.

TOTAL AREA: 877 sq.ft.

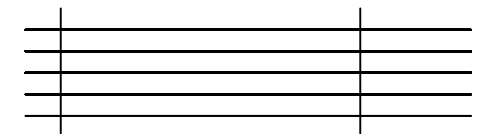




BASEMENT FLOOR PLAN



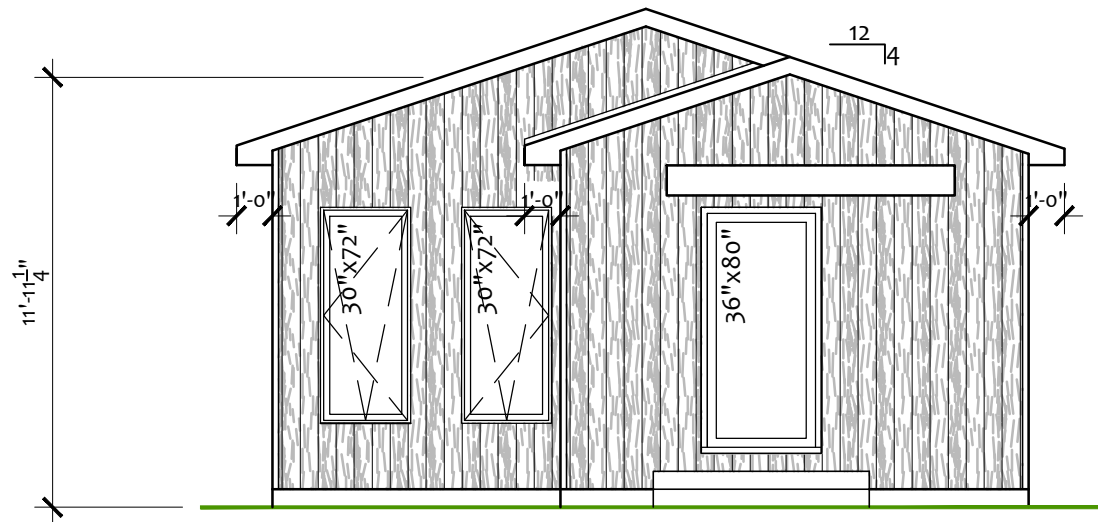
GROUND FLOOR PLAN



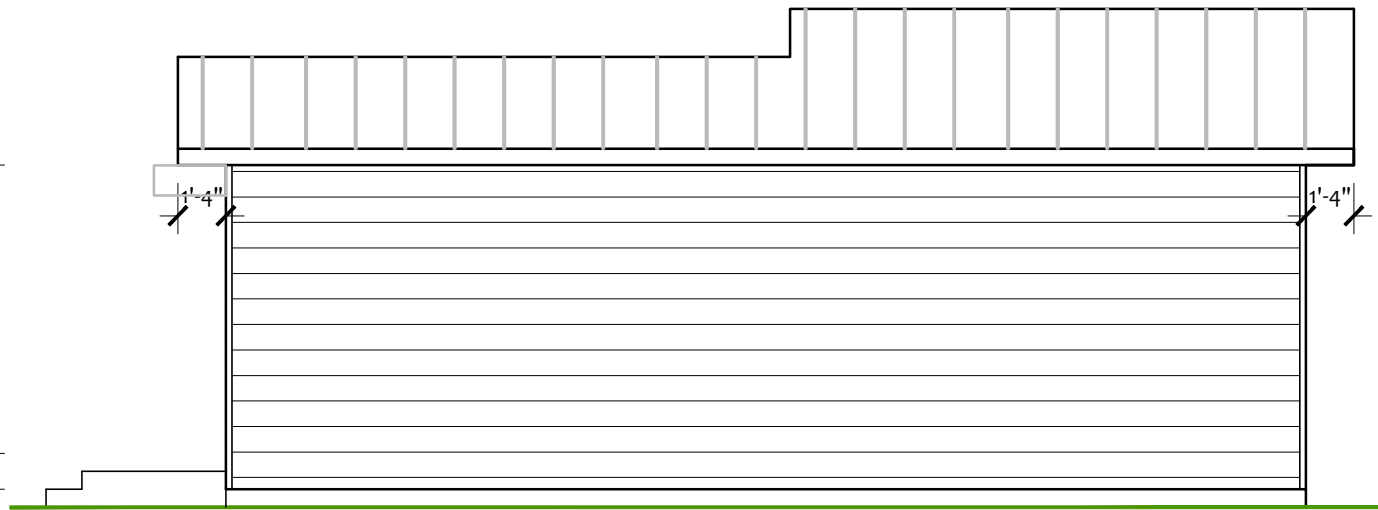
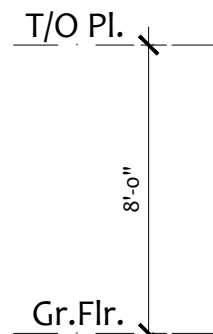
The Bytown Cottage

GROUND FLOOR PLAN

SCALE: 3/16" = 1'0" (11x17)



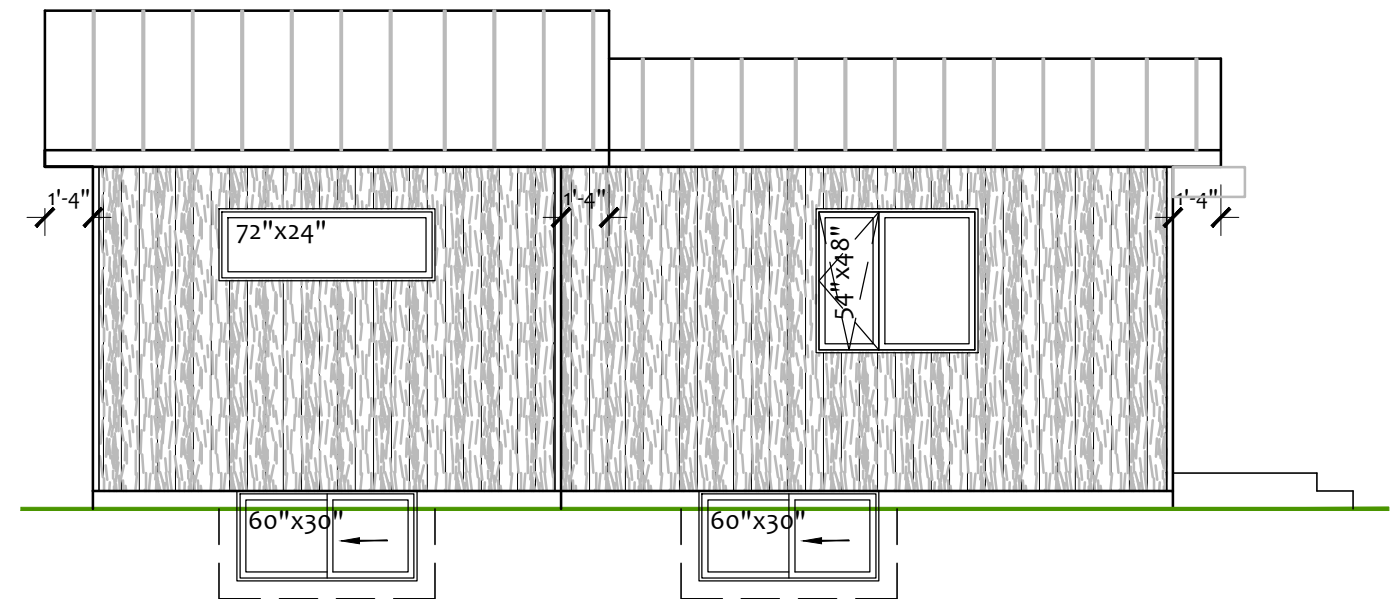
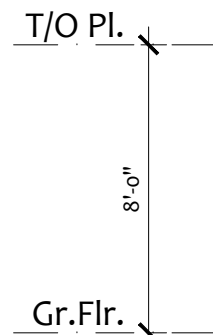
FRONT ELEVATION



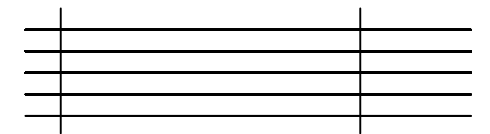
SIDE ELEVATION



REAR ELEVATION



SIDE ELEVATION



The Bytown Cottage
FRONT, REAR & SIDE ELEVATIONS

SCALE: 3/16" = 1'0" (11x17)