

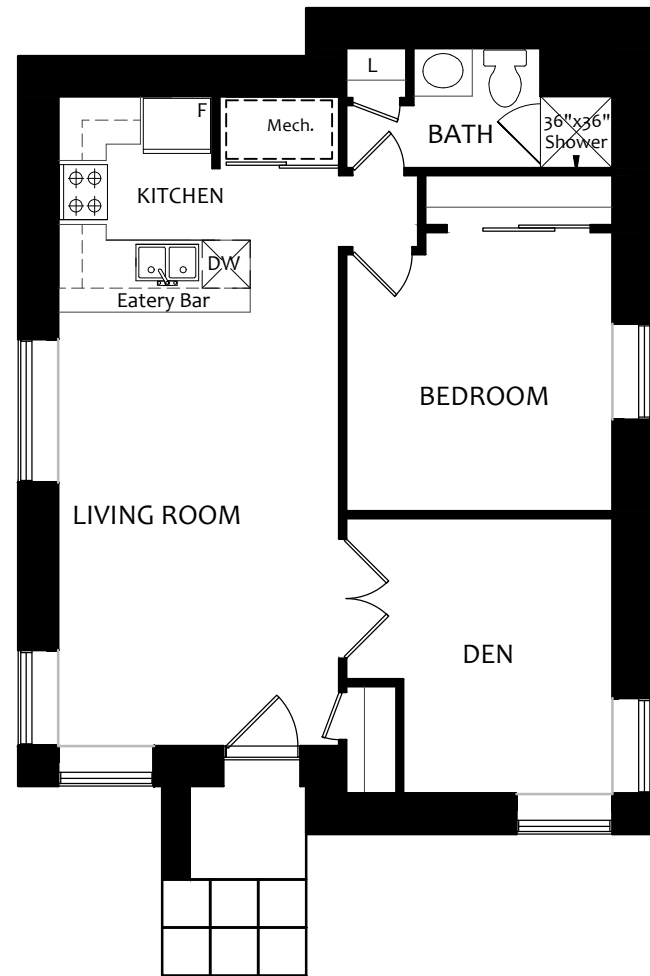


Nepean Point (2) Flipped

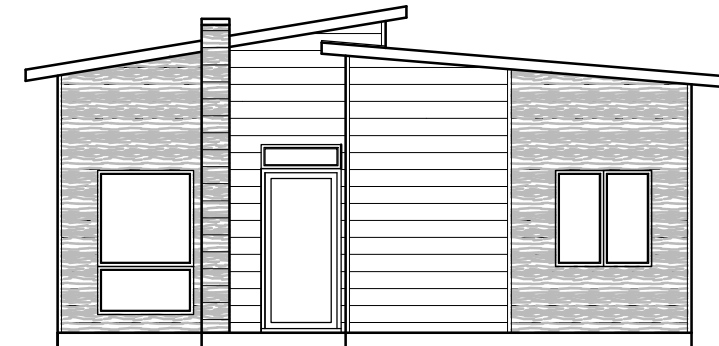
FINISHED AREA:

GROUND FLOOR: 861 sq.ft.

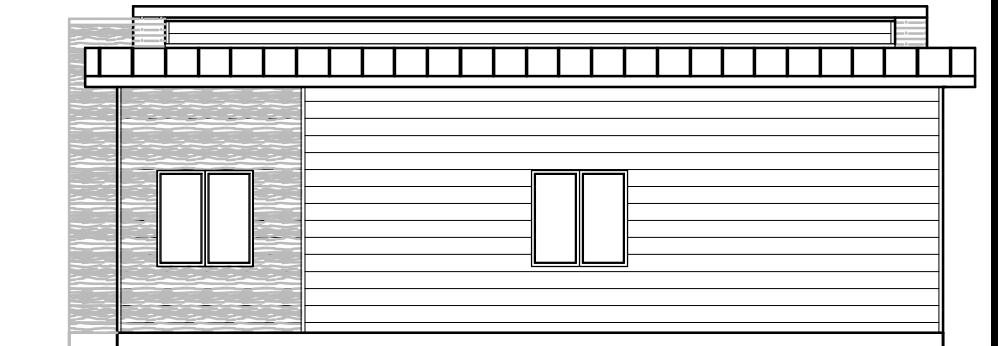




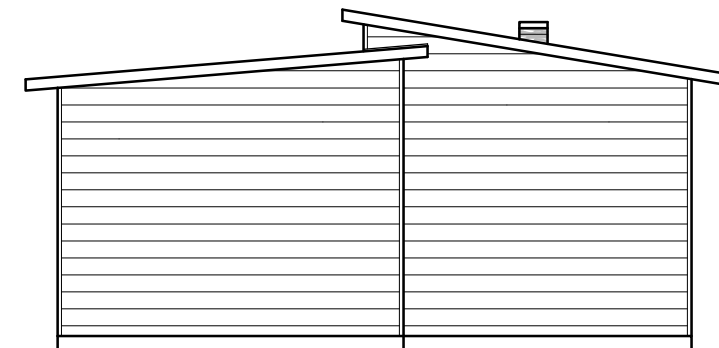
GROUND FLOOR PLAN



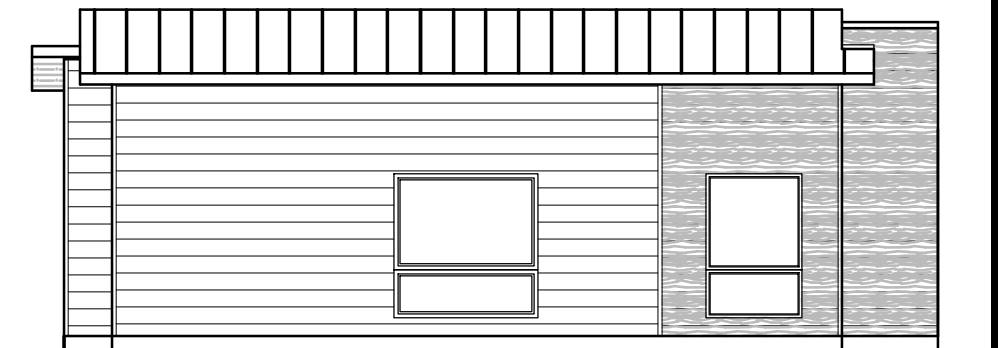
FRONT ELEVATION



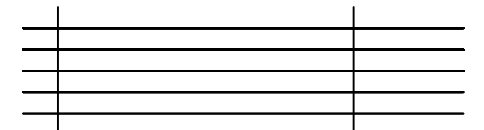
SIDE ELEVATION



REAR ELEVATION

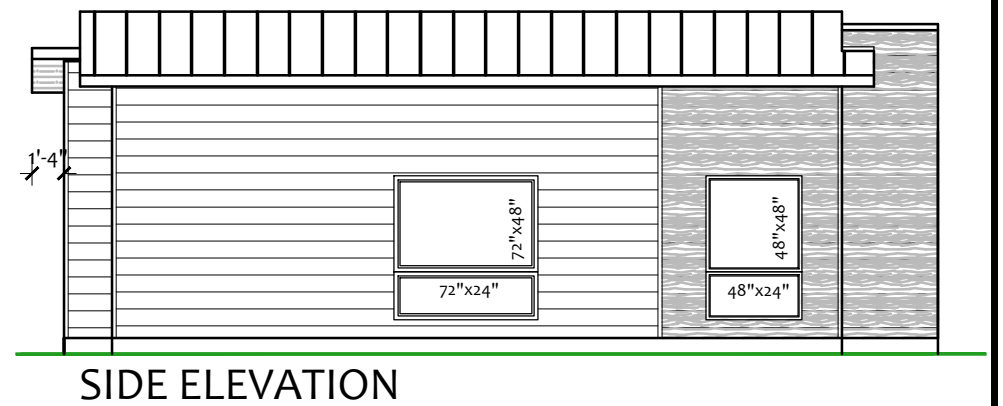
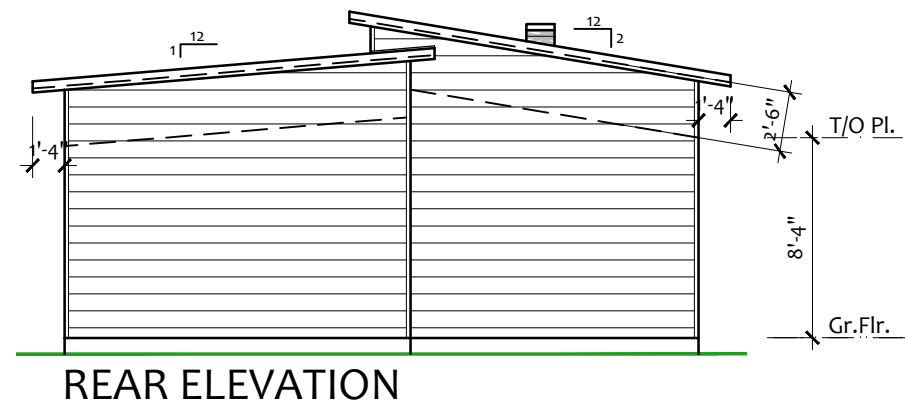
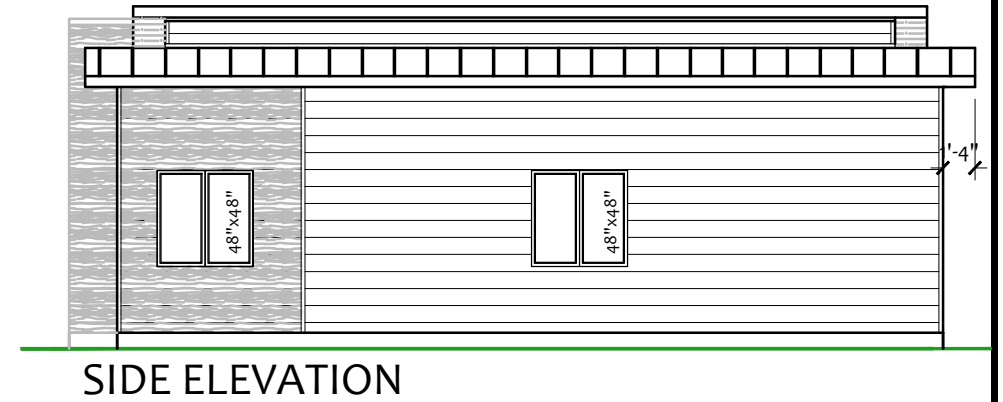
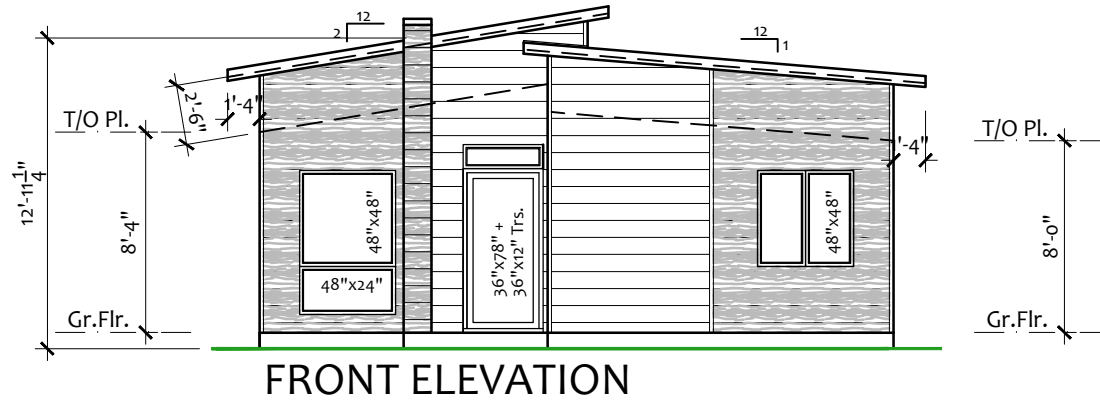
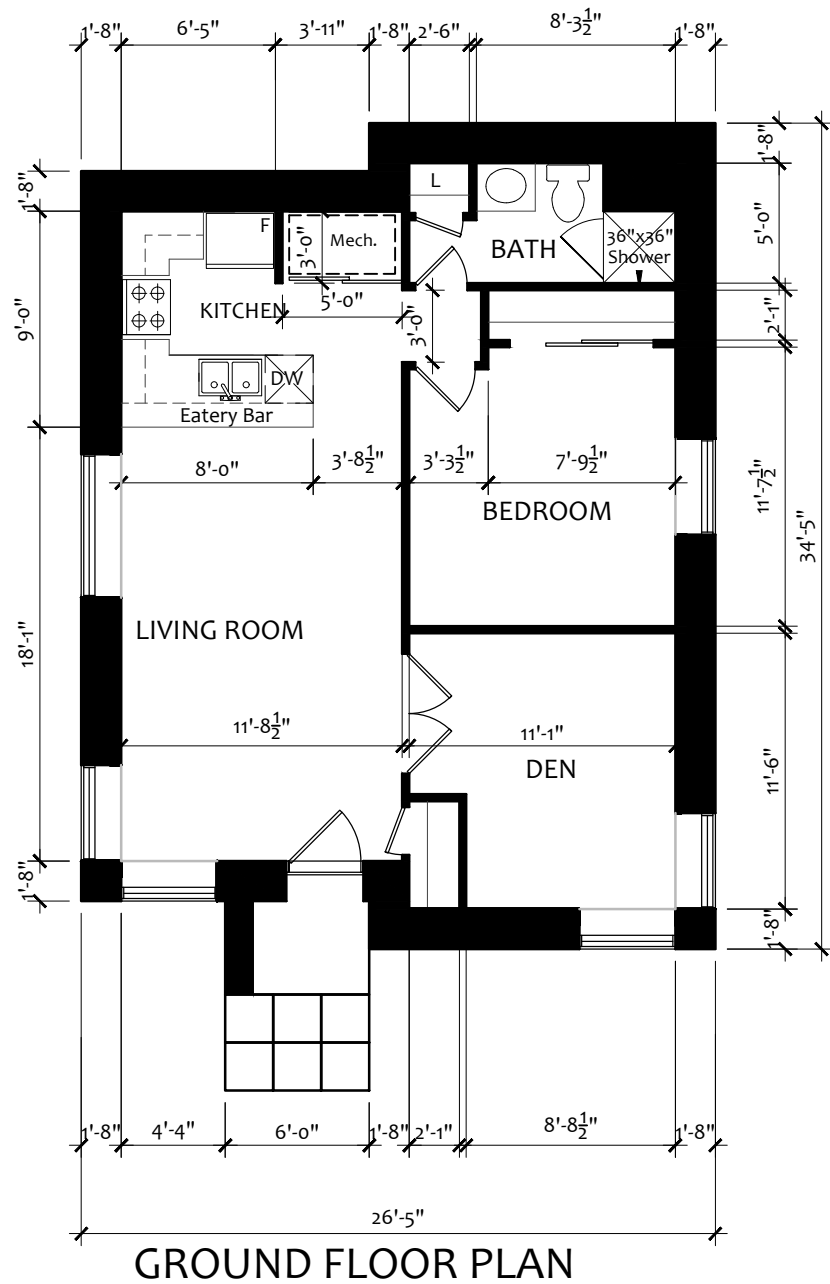


SIDE ELEVATION



Nepean Point (2), Flipped
GROUND FLOOR PLAN

SCALE: 1/8" = 1'0" (11x17)





Nepean Point (2), Flipped

GROUND FLOOR PLAN

SCALE: 1/8" = 1'-0" (11x17)