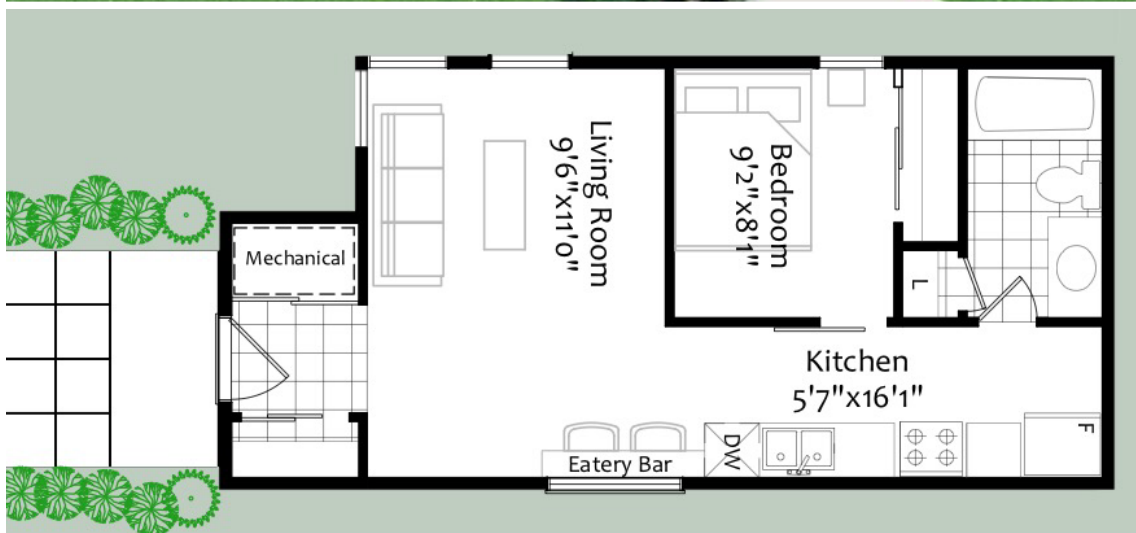


# “COST ANALYSIS”



Model: Tiny Canuck  
Style: EkoCoachHouse  
Location: Ottawa , Ontario

# 'HOUSE' SPECIFIC COSTS

---

## Foundation

---

- granular base
- slab-on-grade style foundation, steel trowel finish
- styrofoam tray beneath slab

---

## CoachHouse Materials Package

---

- EkoCoachHouse (Tiny Canuck) shell materials

---

## CoachHouse Materials Installation

---

- EkoCoachHouse (Tiny Canuck) shell Installation

---

## Roof Cover

---

- Steel Roofing, wakefield Bridge shingles  
[http://www.idealroofing.ca/english\\_canada/html/prod\\_wakefieldbridge.php?type=en](http://www.idealroofing.ca/english_canada/html/prod_wakefieldbridge.php?type=en)

---

## Fascia / Soffit

---

- Aluminum fascia & soffit



---

## Exterior Siding & Trim

---

- Exterior siding, goodfellow engineered wood maintenance-free siding - [http://www.goodfellowinc.com/en/categorie\\_produit/siding-goodstyle-wood/](http://www.goodfellowinc.com/en/categorie_produit/siding-goodstyle-wood/)
- Exterior Window / Door Trim, goodfellow

---

## Insulation

---

- Exterior Walls - dense-pack Cellulose
- Roof – dense-pack Cellulose

---

## Plumbing

---

- ABS, Pex pipe & fittings to all fixtures
- 2 exterior hose taps

---

## Electrical

---

- 60 amp service
- All wiring to plugs, switches & mechanicals
- 2 exterior plugs
- Telephone & cable wiring



---

## HVAC

---

- Heating & Air Conditioning – Mitsubishi Mr. Slim air-to-air heat pump
- HRV – Zehnder, comfoAir 150

---

## Drywall

---

- Drywall for all walls & ceilings, ready for paint

### **TOTAL (house to drywall stage)**

**EkoCodePlus - \$105,875 + hst**

---

## INTERIOR FINISHINGS, example– 26.5k

---

- Paint for walls & ceilings (2.5k)
- Cleaned & sealed concrete floor (2.5k)
- Kitchen & Vanities c/w laminate counters (10k)
- Carpentry - interior doors, window / door trim, baseboards (6.5k)
- Plumbing / electrical fixtures (2.5k)
- Tiles @ washrooms (2.5k budget)

### NOTES:

- Building Permits are not included
- Land Specific work is not included (excavation, backfill, laneway, landscaping, etc...

**TOTAL, Tiny Tulip, FINISHED - \$132,375 + hst**

- Note: Does not include city permits or services.

