

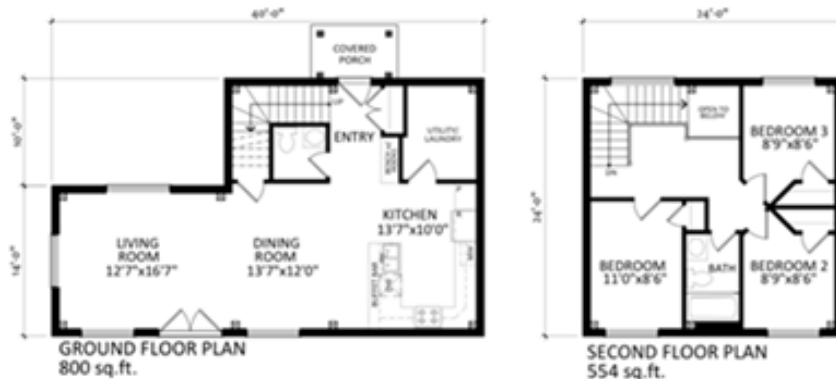
COST ANALYSIS



Product: **Eko PassiveHouse**

Design: **Tall Meadow**

1354 square feet, 3 bed / 2 bath



'HOUSE' SPECIFIC COSTS

Foundation \$30k

- Compacted Base, 6 - 12" granular material (2k)
 - Syrofoam Tray Slab-on-grade system
-

PassiveHouse Shell Materials - \$93,507

- PassiveHouse shell material package
-

PassiveHouse Shell Installation - \$40,620

- PassiveHouse shell installation
-

Roof Cover - \$13k

- Steel Roofing, Wakefield Bridge
-

Fascia / Soffit – \$5k

- Aluminum fascia & soffit
-

Exterior Siding & Trim – \$18k

- Exterior siding, Goodfellow engineered wood maintenance-free siding
 - Exterior Window / Door Trim, Goodfellow
-



Insulation \$15k

- Exterior Shell Walls - 20" (R-75) blown Cellulose
- Roof – 30" (R-110) blown Cellulose

Plumbing – \$7k

- ABS, Pex pipe & fittings to all fixtures
- 2 exterior hose taps
- Heat-pump water heater
- Valves on all accessible fixtures

Electrical – \$12k

- 200 amp service
- All wiring to plugs, switches & mechanicals
- 2 exterior plugs
- Telephone & cable wiring

HVAC – \$18k

- Heating – Radiant floors
- HRV & Air Conditioning – Minotair

Drywall – \$12k

- Drywall for all walls & ceilings, ready for paint

TOTAL (drywall stage) Passive \$264,127 + HST



INTERIOR FINISHINGS, example– \$55k

- Paint for walls & ceilings (5k)
- Cleaned & sealed concrete floor, Including second floor (9k)
- Kitchen & vanities budget (16k)
- Carpentry - interior doors, window / door trim, baseboards (17k)
- Plumbing / electrical fixtures (3k budget)
- Tiling in washrooms (5k budget)

NOTES:

- Building Permits & Project Management are not included
- Site work is not included (excavation, backfill, landscaping, etc.)

TOTAL (estimated build) Passive \$319,127 + HST



Others

- Project Management options:
 - To Drywall Stage (17.5k)
 - To Finish (25k)

Note: project management includes site toilet, fencing, temporary electricity

- Garage, 12' x 24' uninsulated, no drywall (25k)
- Building Permits (2.5k)
- Demolition & Removal, existing home (15k)
- Services (5k)
- Backfill / Grading / Laneway (15k)

