

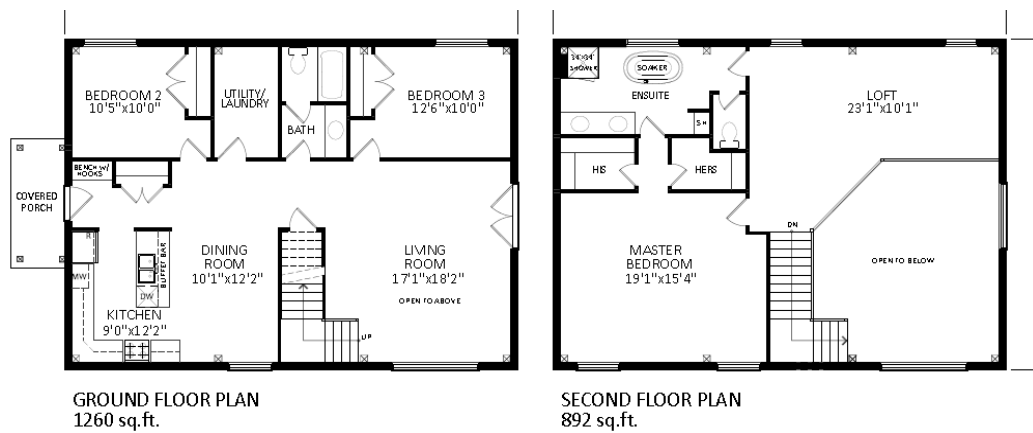
COST ANALYSIS



Product: **Eko PassiveHouse**

Design: **Stonecrop**

2152 square feet, 3+1 bed / 2 bath



'HOUSE' SPECIFIC COSTS

Foundation – \$32k

- Compacted Base, 6 - 12" granular material (2k)
 - Syrofoam Tray Slab-on-grade system
-

PassiveHouse Shell Materials - \$139,337

- PassiveHouse shell material package
Notes: includes full 2nd floor frame & basement perimeter frame
-

PassiveHouse Shell Installation - \$64,298

- PassiveHouse shell Installation
-

Roof Cover - \$15k

- Steel Roofing, Wakefield Bridge
-

Fascia / Soffit – \$4.5k

- Aluminum fascia & soffit
-

Exterior Siding & Trim – \$27k

- Exterior siding, Goodfellow engineered wood maintenance-free siding
 - Exterior Window / Door Trim, Goodfellow
-



Insulation – \$16k

- Exterior Shell Walls - 20" (R-75) blown Cellulose
- Roof – 30" (R-110) blown Cellulos
- Basement – (R-24) perimeter inside (R-20) foundation styrofoam

Plumbing – \$12k

- ABS, Pex pipe & fittings to all fixtures
- 2 exterior hose taps
- Heat-pump water heater included
- Valves on all accessible fixtures

Electrical – \$15k

- 200 amp underground service
- All wiring to plugs, switches & mechanicals. Fixtures installed
- 2 exterior plugs
- Telephone & cable wiring

HVAC – \$25k

- Heating – Radiant floors
- HRV & Air Conditioning – Minotair

Drywall – \$15k

- Drywall for all walls & ceilings



TOTAL (drywall stage) Passive \$365,135 + HST

Interior Finishes – \$98k

- Paint / Stain – all drywalled areas & trim / doors (10k)
- Wood Flooring (Logs End 2nd floor) @ concrete seal 1st floor (15k)
- Tiling in washrooms (8k)
- Kitchen & Vanities including stone counters (30k)
- Carpentry – stairs / railing, interior doors & trim including baseboard, window trim (20k)
- Plumbing & electrical Fixtures (7.5k)
- Closets / built-ins (7.5k)

NOTES:

- Does not include interior finishes listed below
- Project Management is not included

TOTAL (estimated build) Passive \$463,135 + HST



Others

- Project Management options:
 - To Drywall Stage 17.5k
 - To Finish 25k

Note: project management includes site toilet, fencing, temporary electricity

- Garage, 12' x 24' uninsulated, no drywall (25k)
- Building Permits (2.5k)
- Demolition & Removal, existing home (15k)
- Services (5k)
- Backfill / Grading / Laneway (15k)

