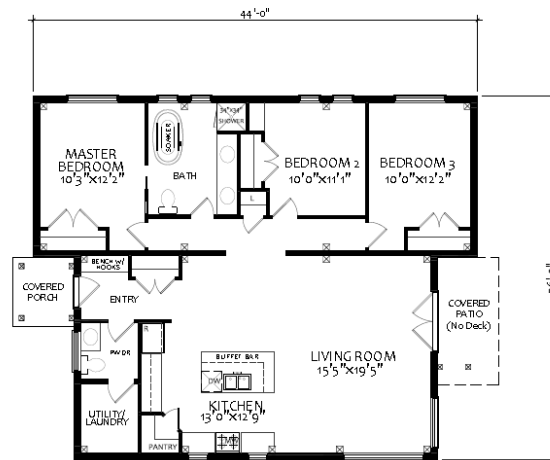




“COST ANALYSIS”



PRODUCT: Eko PassiveHouse

DESIGN: **Foxglove**



'HOUSE' SPECIFIC COSTS

Foundation

- Concrete footings
- Weeping tile (drainage) to dry well
- 11 ¼" ICF (R-20 Insulated Concrete Form) foundation wall system
- Additional 7.5" EPS (R-30 expanded Polystyrene) on interior of ICF
- 12.5" EPS (R48 beneath concrete slab)

Total Foundation: \$34,225

Concrete Floor

- Professional Concrete floor finishing

Total Concrete floor finish: \$3,750

Weather-Tight Shell Materials

- Eko PassiveHouse weather-tight material package

Total Weather-tight Shell Materials: \$88,167

Weather-Tight Shell Installation

- Installation of complete Weather-tight Material Package

Total Weather-tight Shell Installation: \$33,563



Roofing

- Wakefield Bridge steel shingles, by Ideal Roofing
Total Roofing: \$12,000

Fascia / Soffit

- Aluminum fascia & vented soffit
Total fascia & soffit: \$3,500

Exterior Siding & Window / Door Trim

- Engineered Wood Siding, Maintenance-Free
Total Siding & Trim: \$13,500

Insulation

- Pro-cell blue (by Thermocell) dense-pack cellulose insulation
Total Insulation: \$12,500

Plumbing

- ABS, Pex pipe & fittings to all fixtures
 - 2 exterior hose taps
 - Hot water tank hookup
 - Valves on all accessible fixtures
- Total Plumbing: \$7,250



Electrical

- 200 amp underground service
- All wiring to plugs, switches & mechanicals
- 2 exterior plugs
- Telephone & cable wiring

Total Electrical: \$9,750

HVAC (heating, ventilation, air conditioning)

- Heating & Air Conditioning – Mitsubishi Zuba air-to-air heat pump
- HRV – Zehnder Comfoair 200

Total HVAC: \$15,000

Drywall

- Drywall for dormers, interior partitions, & main ceiling
- All surfaces painted

Total Drywall: \$18,425

Plumbing & Electrical Fixtures

Total Plumbing & Electrical Fixtures Allowance: \$4,500



Interior Finishes, including installation

- Kitchen & Vanities including stone counters (24k allowance)
 - Pine interior doors, door & window trim including baseboard (12k allowance)
 - Tile-work in washrooms (allowance \$7500)
- Total Interior Finish Allowance: \$43,500

TOTAL 'HOUSE' SPECIFIC COSTS - \$299,630

'LAND' SPECIFIC COSTS

- Laneway (gravel) 60 feet
 - Excavation for foundation walls
 - Foundation Backfill (sand)
 - Septic System
 - Drilled well
- Total Land Specific Costs: \$37,500

The total price tag, including house and land elements, came to \$337,130 You can download the full cost analysis in a four-page document [PDF].

