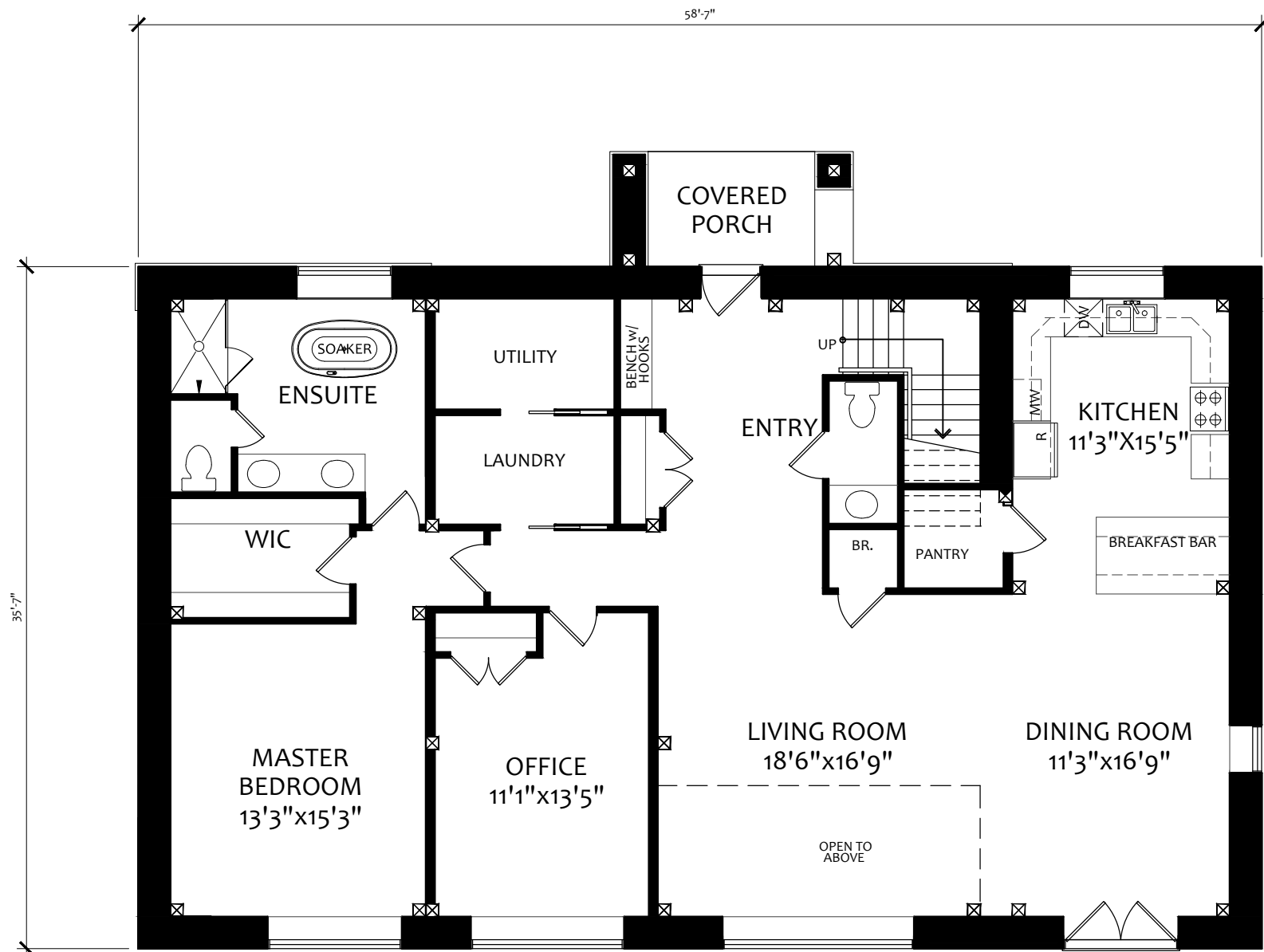
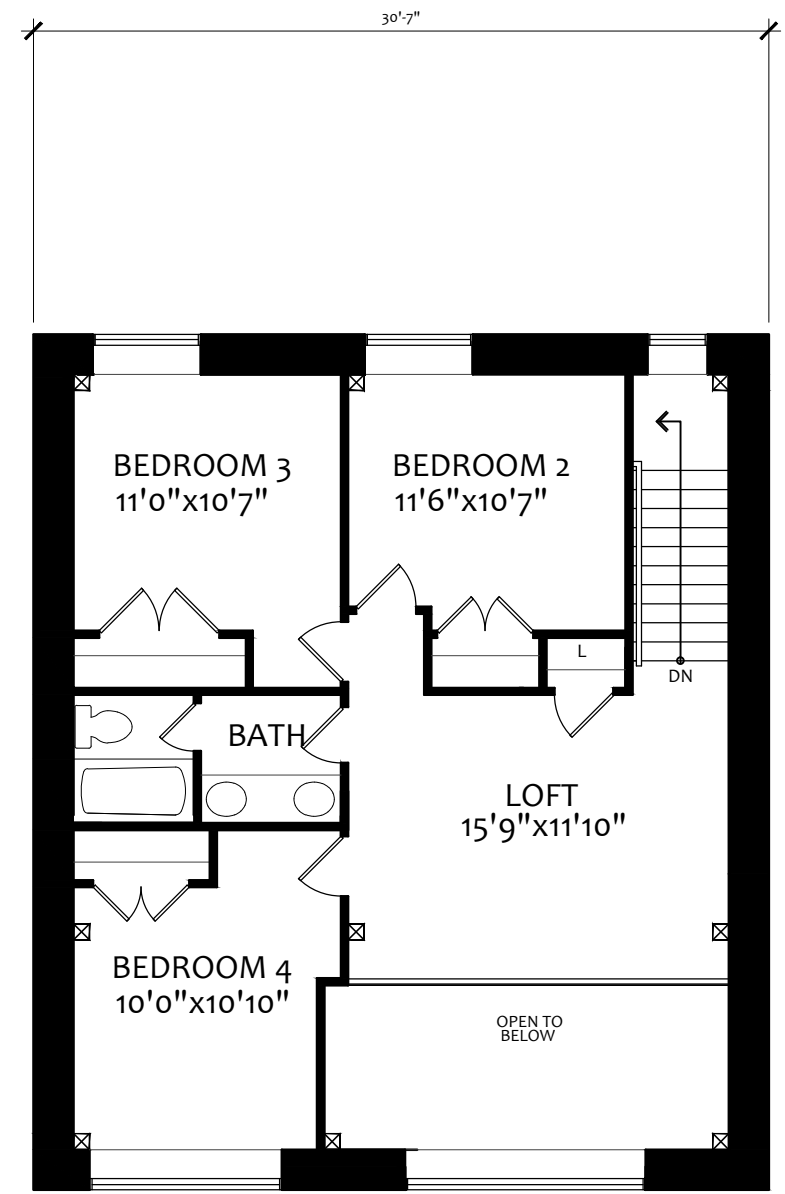




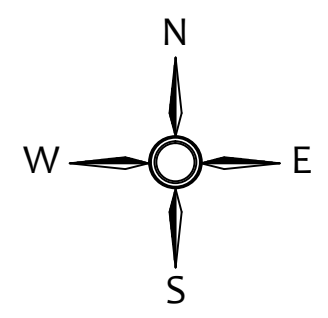
TRILLIUM
3060 sq.ft.



GROUND FLOOR PLAN
2085 sq.ft.



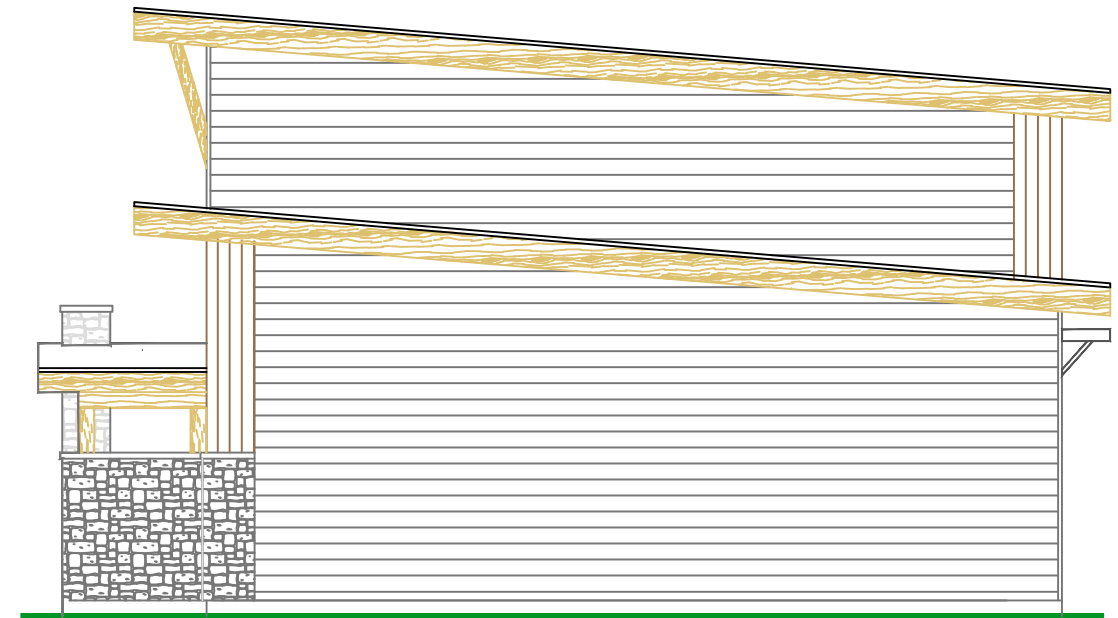
SECOND FLOOR PLAN
975 sq.ft. (115 sq.ft. O.T.B.)



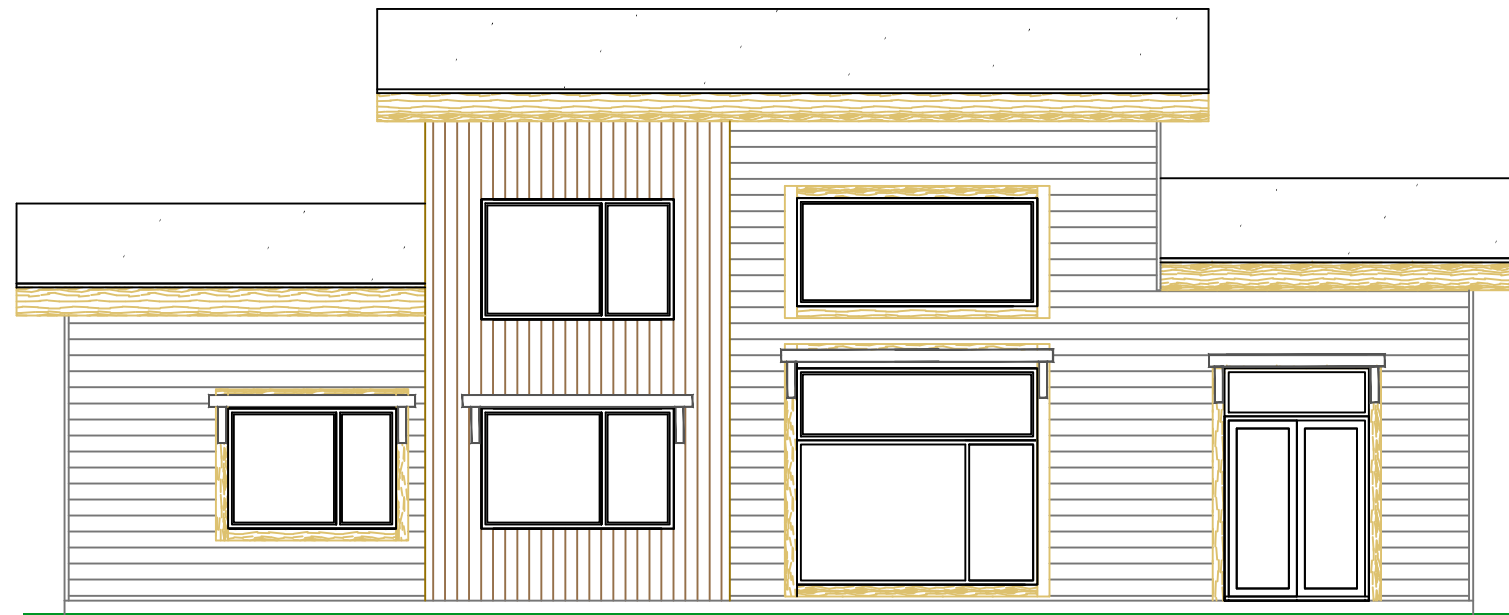
TRILLIUM
3060 sq.ft.



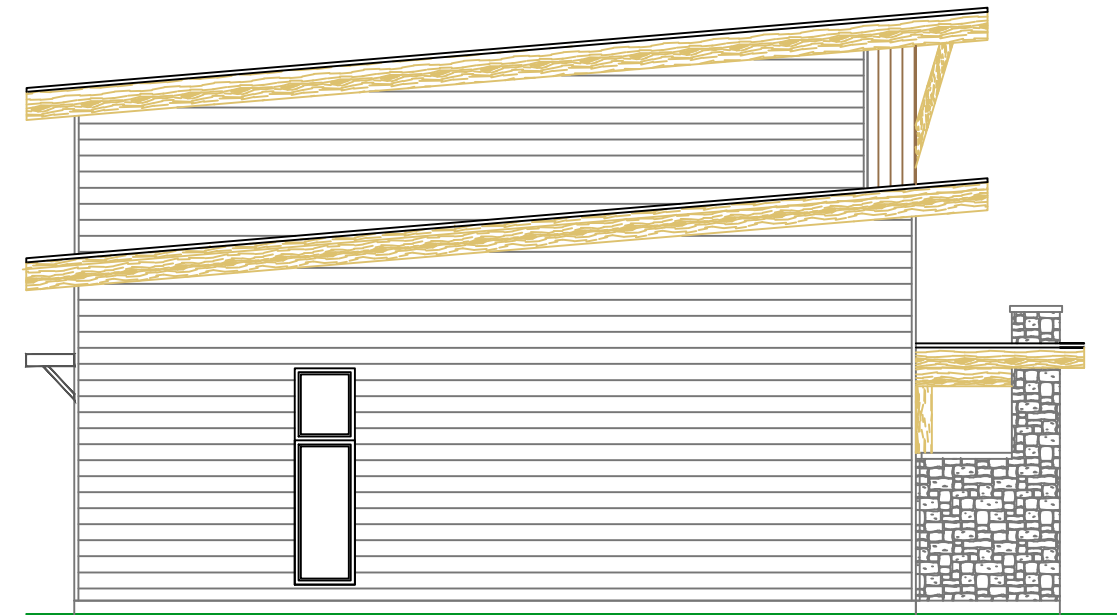
NORTH ELEVATION



WEST ELEVATION



SOUTH ELEVATION



EAST ELEVATION



TRILLIUM
3060 sq.ft.