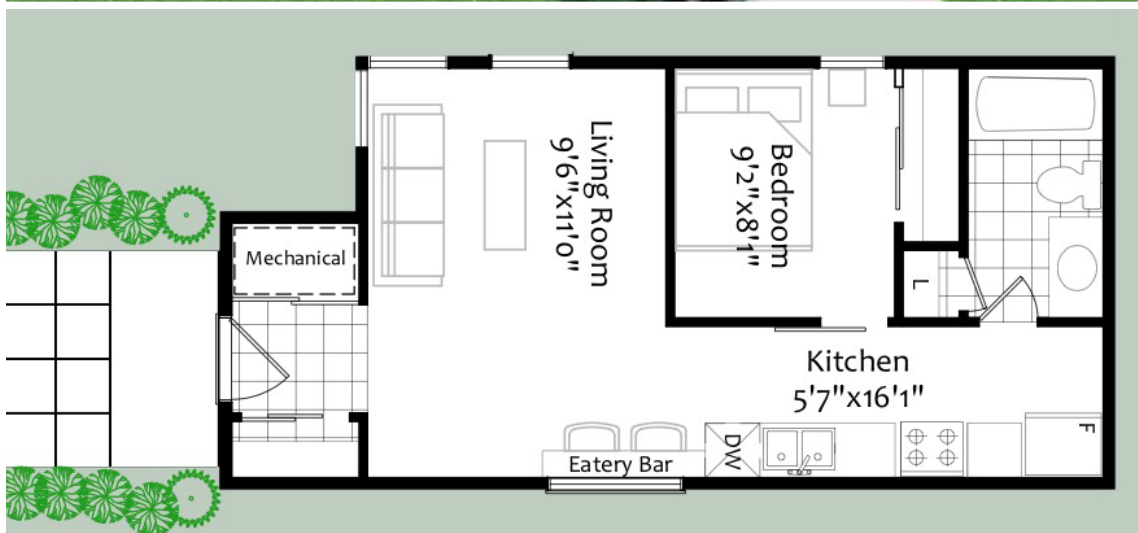


“COST ANALYSIS”



Model: Tiny Canuck
Style: EkoCoachHouse
Location: Ottawa , Ontario

'HOUSE' SPECIFIC COSTS

Foundation

- granular base
- slab-on-grade style foundation, steel trowel finish
- styrofoam tray beneath slab

CoachHouse Materials Package

- EkoCoachHouse (Tiny Canuck) shell materials

CoachHouse Materials Installation

- EkoCoachHouse (Tiny Canuck) shell Installation

Roof Cover

- Steel Roofing, wakefield Bridge shingles
http://www.idealroofing.ca/english_canada/html/prod_wakefieldbridge.php?type=en

Fascia / Soffit

- Aluminum fascia & soffit



Exterior Siding & Trim

- Exterior siding, goodfellow engineered wood maintenance-free siding - http://www.goodfellowinc.com/en/categorie_produit/siding-goodstyle-wood/
- Exterior Window / Door Trim, goodfellow

Insulation

- Exterior Walls - dense-pack Cellulose
- Roof – dense-pack Cellulose

Plumbing

- ABS, Pex pipe & fittings to all fixtures
- 2 exterior hose taps

Electrical

- 60 amp service
- All wiring to plugs, switches & mechanicals
- 2 exterior plugs
- Telephone & cable wiring



HVAC

- Heating & Air Conditioning – Mitsubishi Mr. Slim air-to-air heat pump
- HRV – Zehnder, comfoAir 150

Drywall –

- Drywall for all walls & ceilings, ready for paint

TOTAL (house to drywall stage)

EkoCodePlus - \$105,875 + hst

EkoPassive - \$119,377 + hst

INTERIOR FINISHINGS, example– 26.5k

- Paint for walls & ceilings (2.5k)
- Cleaned & sealed concrete floor (2.5k)
- Kitchen & Vanities c/w laminate counters (10k)
- Carpentry - interior doors, window / door trim, baseboards (6.5k)
- Plumbing / electrical fixtures (2.5k)
- Tiles @ washrooms (2.5k budget)

NOTES:

- Building Permits are not included
- Land Specific work is not included (excavation, backfill, laneway, landscaping, etc...)

